

Enviro-Screen Report

Big W, Shop 46, Campsie Centre
Sydney, NSW

06 May 2024






Report n°:
LI-4105 ESR

Understanding your report

Thank you for ordering your report from Land Insight. If you have any feedback, questions or queries, please get in touch with us at orders@landinsight.co.au.

Your Report has been produced by Land Insight and contains information related to current and historical land use information, environmental risks and hazards.

The information presented in this report includes Land Insights' comprehensive research into current and historical land use derived from Land Insight's proprietary National Land Use Atlas (NLUA), environmental risk information and data available from public databases, third party providers, local and state authorities. The report also includes detailed property and soil setting information, hydrogeology, identification of potential pollution and contamination along with ground and natural hazards. The records identified are presented within a 200 to 2000m radius (buffer zone) from the boundaries of the Property searched, depending on the screened constraint. The report is separated and grouped into easy to navigate sections as per Summary below:

	Section 1	PROPERTY SETTING	Sensitive Receptors, Planning Controls, Zoning, Heritage, Soil and Land Information, Geology and Topography
	Section 2	HYDROGEOLOGY	Groundwater Bores and Other Borehole investigations, Groundwater Dependent Ecosystems (GDE), Aquifer and Wetland, Other Hydrogeology information.
	Section 3	ENVIRONMENTAL REGISTERS, LICENCES AND INCIDENTS	Contaminated Land Public Register, Licences, Audits and Orders, Sites Regulated by Other Jurisdictional Body (Former Gaswork sites / PFAS sites, UXO Areas), Historical Landfills, Derelict Mines and National Pollutant Inventory (NPI).
	Section 4	POTENTIALLY CONTAMINATED AREAS	Potentially Contaminating activities (Industries, businesses and activities that may cause contamination), Historical Potentially Contaminating activities and Historical Land Use.
	Section 5	NATURAL HAZARDS	Erosion hazard, Flood hazards, Bushfire prone land and Bushfire history.

This report includes data listed on page 4 (table of contents). All sources of data and definitions are provided in the Product Guide (Attached). For a full list of references, metadata, publications or additional information not provided in this report, please contact orders@landinsight.co.au.

This report does not include information derived from a physical inspection. It is important to note that a site inspection can present information relevant to other risks and hazards that may not be identified by this Report.

Due to the ongoing nature of database development and frequency of updates provided by various state government regulators and data sources, the data displayed within this report is only current from date of production. While every effort is made to ensure the details in your Report are correct, Land Insight cannot guarantee the accuracy or completeness of the information and/or data provided.

This Report, and your use of it, is regulated by Land Insight's Terms and Conditions. For more information, see Land Insight's Product Guide.

Data maintenance schedule

Dataset name	Update frequency	Dataset buffer
Section 1 - Property Setting		
Sensitive Receptors	Quarterly	200m
Planning Controls (<i>Zoning, Planning Instruments, Other planning information</i>)	Quarterly	500m
State and Local Heritage	Quarterly	200m
Commonwealth, National and World Heritage Areas	Annually	200m
Soil Landscape and Land Use Information	Annually	500m
Salinity Hazard	Annually	500m
Radon Level	Annually	500m
State, Local and National Acid Sulfate Soil (ASS)	Annually	500m
Geology	Annually	500m
Naturally Occurring Asbestos Potential	Annually	500m
Topography	As required	500m
Section 2 - Hydrogeology		
Groundwater Aquifers	Annually	2000m
Wetlands	Annually	2000m
Groundwater Bores	Annually	2000m
Drinking Water Catchments	Annually	500m
Groundwater Prohibition/Restricted Use/Exclusion Zones	Annually	500m
Hydrogeologic Units	Annually	500m
Groundwater Dependent Ecosystems	Annually	500m
Other Borehole Locations (<i>Coal Seam Gas, Petroleum Wells, other boreholes</i>)	Annually	500m
Section 3 - Environmental Registers, Licences and Incidents		
Contaminated Land Public Register	Monthly	1000m
Licences, Approvals, Audits, Authorisations & Assessments		
Licences	Monthly	1000m
Surrendered Licences	Monthly	1000m
Clean Up Notices, Penalty Notices and Orders	Monthly	1000m
Permissions	Monthly	1000m
Audits	Monthly	1000m
Authorisations	Monthly	1000m
Sites Regulated by other Jurisdictional Body		
Contaminated Legacy Areas (<i>James Hardies Asbestos, Pasminco Smelter and Uranium sites</i>)	Quarterly	2000m
Defence 3 Year Regional Contamination Investigation Program (RCIP)	Quarterly	2000m
Defence Sites - Current and Former	Ongoing	2000m
Unexploded Ordnance (UXO) Sites - Department of Defence (DoD)	Annually	2000m
Former Gasworks Sites	Ongoing	2000m
PFAS Investigation Sites (<i>EPA PFAS Investigation Program/s, AirServices Australia etc.</i>)	Monthly	2000m
NPI Industrial Facilities	Annually	2000m
Section 4 - Potentially Contaminated Areas		
Potentially Contaminating Activities (PCA) (<i>Petrol Stations, Dry cleaners, Waste sites etc</i>)	Ongoing	500m
Historical Business Directory (<i>Commercial and Trade Directory Data from 1990-2020</i>)	Not required	200m
Section 5 - Natural Hazards		
Bushfire Prone Areas	Bi-annual	500m
Bushfire History	Bi-annual	500m
Erosion Hazard	Bi-annual	500m
Flood Hazard	Ongoing	500m

Index

1.1 SENSITIVE RECEPTORS Map 1.1 (200m Buffer)	3
1.2a PLANNING CONTROLS Map 1.2a (500m Buffer)	3
Zoning	3
1.2b PLANNING OVERLAYS Map 1.2b (500m Buffer)	4
Environmental Planning Instruments	4
Other Planning Information	4
1.3 HERITAGE Map 1.3 (200m Buffer)	5
State and Local Heritage Registers	5
Australian Heritage Database Register	5
1.4a SOIL AND LAND USE INFORMATION Map 1.4a (500m Buffer)	5
Soil Landscape	5
Salinity	5
Radon	6
1.4b ACID SULFATE SOIL Map 1.4b (500m Buffer)	6
State and Local Acid Sulfate Soil Registers	6
National Acid Sulfate Soil Register	6
1.5 GEOLOGY AND TOPOGRAPHY Map 1.5 (500m Buffer)	6
Geology	6
Naturally Occurring Asbestos Potential (NOA)	7
Topography	7
2.1 GDE & HYDROGEOLOGY CONSTRAINTS Map 2.1 (2000m Buffer)	8
Aquifer Type	8
Groundwater Protection Areas	8
Wetlands	8
Groundwater Dependent Ecosystems (GDE) - Aquatic (Surface)	8
Groundwater Dependent Ecosystems (GDE) - Terrestrial (Subsurface)	9
Groundwater Licences (Western Australia)	9
Groundwater Bores	9
Groundwater Bores Driller Lithology Details	10
2.2 GROUNDWATER AND OTHER BORES Map 2.2 (2000m Buffer)	11
Groundwater Restricted Use Zones	11
Groundwater Salinity	11
Other Known Borehole Investigations (Coal Seam Gas (CSG), Petroleum Wells and Other Boreholes)	11
3.1 CONTAMINATED LAND PUBLIC REGISTER Map 3.1 (1000m Buffer)	20
Contaminated Sites	20
3.2 LICENCES, APPROVALS & ASSESSMENTS Map 3.2 (500m Buffer)	21
Licences	21
Audits	22
Clean Up, Penalty Notices and Orders	22
3.3a SITES REGULATED BY OTHER JURISDICTIONAL BODY Map 3.3a (2000m Buffer)	23
Contaminated Legacy Areas	23
Defence, Military Sites and UXO Areas	23
Former Gasworks Sites	23
PFAS Sites	23
3.3b OTHER POTENTIAL HAZARD SOURCES Map 3.3b (500m Buffer)	23
Mines and Quarries (current and historical)	23
Landfills (current and historical)	23
National Pollutant Inventory (NPI)	23

4.1 POTENTIALLY CONTAMINATING ACTIVITIES Map 4.1 (200m Buffer).....	24
Liquid Fuel Facilities	24
Waste Management Facilities & Recycling Centres.....	24
4.2 HISTORICAL BUSINESS DIRECTORIES (not mapped)	25
5.1 Fire Hazard Map 5.1 (500m Buffer).....	36
Bushfire Prone Areas	36
Bushfire History	36
5.2 Flood Hazard Map 5.2 (500m Buffer)	36
Flood Planning Area	36
Other Flood Studies	36
Flood History	37
5.3 Erosion Hazard Map 5.3 (500m Buffer).....	37
Erosion Hazard.....	37

ATTACHMENTS

Attachment A - Report Maps

Attachment B - Historical Imagery

Land Insight Product Guide and Terms and Conditions



Section 1 Property Setting

1.1 SENSITIVE RECEPTORS

Map 1.1 (200m Buffer)

Sensitive receptor	Type	Distance (m)	Direction
Campsie Library and Knowledge Centre	Community Centres	0.0	Onsite
Saint John's Anglican Church	Places of Worship and Religious Organisations	27.3	North-west
26 Anglo Rd, Campsie NSW 2194	Parks	108.8	North-west
Sydney Central Baptist Church	Places of Worship and Religious Organisations	137.5	South-east
Campsie Public School	Education	154.7	North-east
Arise and Impact Church	Places of Worship and Religious Organisations	159.9	South-east
Campsie Primary OSHCare Centre	Child Care Services	186.4	North-east

1.2a PLANNING CONTROLS

Map 1.2a (500m Buffer)

Zoning

Zoning	Type	Details	Distance (m)	Direction
B2	Local Centre	Canterbury-Bankstown Local Environmental Plan 2023	0.0	Onsite
R3	Medium Density Residential	Canterbury-Bankstown Local Environmental Plan 2023	0.0	Onsite
R4	High Density Residential	Canterbury-Bankstown Local Environmental Plan 2023	80.8	West
RE1	Public Recreation	Canterbury-Bankstown Local Environmental Plan 2023	91.8	North-west
SP2	Infrastructure	Canterbury-Bankstown Local Environmental Plan 2023	158.3	North-west

Zoning	Type	Details	Distance (m)	Direction
B6	Enterprise Corridor	Canterbury-Bankstown Local Environmental Plan 2023	437.5	South-east

1.2b PLANNING OVERLAYS

Map 1.2b (500m Buffer)

Environmental Planning Instruments

Name	Type	Details	Distance (m)	Direction
Maximum Building Height (m): 8-8.9	Height of Building	Canterbury Local Environmental Plan 2012	0.0	Onsite
Maximum Building Height (m): 25-29.9	Height of Building	Canterbury Local Environmental Plan 2012	0.0	Onsite
Land Within a Residential Zone	Coal Seam Gas Exclusions	State Environmental Planning Policy (Resources and Energy) 2021	0.0	Onsite
Minimum Lot Size (sq m) : 450-474	Lot Size	Canterbury Local Environmental Plan 2012	0.0	Onsite
Floor Space Ratio Map: 0.5-0.54	Maximum Floor Space Ratio (n:1)	Canterbury Local Environmental Plan 2012	0.0	Onsite
Buffer Area	Coal Seam Gas Exclusions	State Environmental Planning Policy (Resources and Energy) 2021	0.0	Onsite
Maximum Building Height (m): 17-18.9	Height of Building	Canterbury Local Environmental Plan 2012	4.3	North-east
Class 5	Acid Sulfate Soils	Canterbury Local Environmental Plan 2012	40.8	North-west
Floor Space Ratio Map: 0.9-0.94	Maximum Floor Space Ratio (n:1)	Canterbury Local Environmental Plan 2012	80.8	West
Maximum Building Height (m): 11-11.9	Height of Building	Canterbury Local Environmental Plan 2012	80.8	West
Floor Space Ratio Map: 0.75-0.79	Maximum Floor Space Ratio (n:1)	Canterbury Local Environmental Plan 2012	109.7	South-east
Floor Space Ratio Map: 1.4-1.49	Maximum Floor Space Ratio (n:1)	Canterbury Local Environmental Plan 2012	130.2	North-west
Maximum Building Height (m): 13-14.9	Height of Building	Canterbury Local Environmental Plan 2012	132.2	North-west
Floor Space Ratio Map: 1.5-1.99	Maximum Floor Space Ratio (n:1)	Canterbury Local Environmental Plan 2012	271.3	North-west
Classified Road (SP2)	Land Reservation Acquisition	Canterbury Local Environmental Plan 2012	331.7	South-west
Maximum Building Height (m): 21-22.9	Height of Building	Canterbury Local Environmental Plan 2012	347.5	North
Local Open Space (RE1)	Land Reservation Acquisition	Canterbury Local Environmental Plan 2012	375.9	East
Maximum Building Height (m): 12-12.9	Height of Building	Canterbury Local Environmental Plan 2012	437.5	South-east

Other Planning Information

Name	Category	Details	Distance (m)	Direction
Not identified	-	-	-	-

1.3 HERITAGE

Map 1.3 (200m Buffer)

State and Local Heritage Registers

Site ID	Site Name	Type	Details	Distance (m)	Direction
136	Federation urban park, Anzac Park	Heritage Register	Item - General. Significance is Local.	91.8	North-west
135	Inter war commercial building	Heritage Register	Item - General. Significance is Local.	107.6	North
143	Federation fire station - Campsie Fire Station	Heritage Register	Item - General. Significance is Local.	129.4	South-east
134	War memorial clock tower	Heritage Register	Item - General. Significance is Local.	138.2	North
147	Federation urban park - Carrington Square	Heritage Register	Item - General. Significance is Local.	170.6	West
140	Federation railway station buildings	Heritage Register	Item - General. Significance is State.	186.6	North
142	Inter war commercial building - Station House	Heritage Register	Item - General. Significance is Local.	188.2	North-east

Australian Heritage Database Register

Site ID	Site Name	Type	Details	Distance (m)	Direction
Not identified	-	-	-	-	-

Commonwealth Heritage List, National Heritage List and World Heritage Area.

1.4a SOIL AND LAND USE INFORMATION

Map 1.4a (500m Buffer)

Soil Landscape

Code	Name	Soil Group	Description	Distance (m)	Direction
REbt	Blacktown	Residual	Landscape—gently undulating rises on Wianamatta Group shales. Local relief to 30 m, slopes usually >5%. Broad rounded crests and ridges with gently inclined slopes. Cleared Eucalypt woodland and tall open-forest (dry sclerophyll forest). Soils—shallow to moderately deep (>100 cm) hardsetting mottled texture contrast soils, red and brown podzolic soils (Dr3.21, Dr3.31, Db2.11, Db2.21) on crests grading to yellow podzolic soils (Dy2.11, Dy3.11) on lower slopes and in drainage lines. Limitations—localised seasonal waterlogging, localised water erosion hazard, moderately reactive highly plastic subsoil, localised surface movement potential.	0.0	Onsite

Salinity

Salinity Hazard	Type	Details	Distance (m)	Direction
Not identified	-	-	-	-

Radon

Radon Level (Bq/m ³)	Distance (m)	Direction
6	0.0	Onsite

Typical radon levels in Australia are low and the values shown are the average values for each census district. For specific location, factors such as the local geology and house type could lead to different values. (ARPANSA).

1.4b ACID SULFATE SOIL

Map 1.4b (500m Buffer)

State and Local Acid Sulfate Soil Registers

Name	Classification	Description	Distance (m)	Direction
Acid Sulfate Soils	Class 5	Class 5: Acid sulfate soils are not typically found in Class 5 areas. Areas classified as Class 5 are located within 500 metres on adjacent class 1,2,3 or 4 land. Development consent requirement: Works within 500 metres of adjacent Class 1, 2a, 2b, 3 or 4 land that is below 5 metres Australian Height Datum and by which the watertable is likely to be lowered below 1 metre Australian Height Datum on adjacent Class 1, 2a, 2b, 3 or 4 land.	40.8	North-west

To ensure that development does not disturb, expose or drain acid sulfate soils and cause environmental damage, development consent may be required for the carrying out of works within areas and land shown on the Acid Sulfate Soils Map.

National Acid Sulfate Soil Register

Name	Classification	Description	Distance (m)	Direction
Atlas of Australian Acid Sulfate Soils	Extremely low probability of occurrence	Acid sulfate soil generally within upper 1m in wet / riparian areas.	0.0	Onsite

Source: ASRIS Atlas of Australian Sulfate Soils (CSIRO). Acid Sulfate Soils (ASS) are all those soils in which sulfuric acid may be produced, is being produced, or has been produced in amounts that have a lasting effect on main soil characteristics.

1.5 GEOLOGY AND TOPOGRAPHY

Map 1.5 (500m Buffer)

Geology

Map Sheet	Code	Formation	Age	Group	Dominant Lithology	Description	Distance (m)	Direction
Sydney 1:100,000 Geological Sheet	Twia	Ashfield Shale	Middle Triassic (base) to Middle Triassic (top)	Wianamatta Group	Shale	Black to light grey shale and laminite.	0.0	Onsite
Newcastle to Wollongong Coastal Quaternary Mapping	Q_av	Alluvial valley deposits	Quaternary (base) to Now (top)	Alluvium	Clastic sediment	Silt, clay, (fluvially deposited) lithic to quartz-lithic sand, gravel.	436.4	East

Naturally Occurring Asbestos Potential (NOA)

Category	On the Property?	Within Buffer?
Not identified	-	-

Topography

Topography (Onsite)	20 - 28 mAHD
------------------------	--------------



Section 2 Hydrogeology



2.1 GDE & HYDROGEOLOGY CONSTRAINTS

Map 2.1 (2000m Buffer)

Aquifer Type

Type	Distance (m)	Direction
Porous, extensive aquifers of low to moderate productivity	0.0	Onsite

Groundwater Protection Areas

Name	Water Plan Area	Distance (m)	Direction
Not identified	-	-	-

Wetlands

Name	Description	Distance (m)	Direction
Cooks River	Estuarine water body	1059.8	East
Null	Dam	1491.8	North-west

Groundwater Dependent Ecosystems (GDE) - Aquatic (Surface)

Potential	Distance (m)	Direction
Not identified	-	-

Aquatic - Ecosystems that rely on the Surface expression of groundwater.

Groundwater Dependent Ecosystems (GDE) - Terrestrial (Subsurface)

Potential	Distance (m)	Direction
Not identified	-	-

Terrestrial - Ecosystems that rely on the Subsurface expression of groundwater.

Groundwater Licences (Western Australia)

Map ID	WRI number	Allocation (KL)	Address	All Parties	Distance (m)	Direction
Not identified	-	-	-	-	-	-

Groundwater Bores

Map ID	Groundwater Bore ID	Authorised Purpose	Completion Date	Drilled Depth (m)	Final Depth (m)	SWL (m)	Salinity (mg/l)	Yield (L/s)	Distance (m)	Direction
8	GW105215	Household	05/06/2003	Null	15.0	Null	Null	Null	967.9	North-east
6	GW114574	Monitoring	15/03/2011	7.0	7.0	6.7	Null	Null	993.4	South
5	GW114573	Monitoring	15/03/2011	7.0	7.0	6.7	Null	Null	1011.4	South
7	GW114575	Monitoring	15/03/2011	7.5	7.5	6.7	Null	Null	1024.4	South
4	GW114569	Monitoring	30/03/2011	4.0	5.0	Null	Null	Null	1391.3	East
2	GW114567	Monitoring	11/09/2014	4.0	5.0	Null	Null	Null	1437.5	East
9	GW109519	Monitoring	20/02/2007	Null	6.0	Null	Null	Null	1450.2	West
13	GW109517	Monitoring	16/02/2007	Null	4.0	Null	Null	Null	1452.2	West
10	GW109518	Monitoring	16/02/2007	Null	5.0	Null	Null	Null	1453.3	West
11	GW109516	Monitoring	16/02/2007	Null	6.5	Null	Null	Null	1456.7	West
1	GW109699	Household	11/12/2008	90.0	90.0	6.0	Salty	0.1	1457.8	North-west
12	GW109515	Monitoring	16/02/2007	Null	6.5	Null	Null	Null	1467.0	West
3	GW114568	Monitoring	30/03/2011	4.0	5.0	Null	Null	Null	1477.7	East
18	GW116412	Null	Null	6.1	6.1	Null	Null	0.5	1747.3	North
17	GW116411	Null	Null	6.0	6.0	Null	Null	0.3	1763.0	North
19	GW116414	Null	Null	6.1	6.1	Null	Null	0.5	1766.8	North
16	GW116410	Null	Null	6.1	6.1	Null	Null	0.5	1793.3	North
20	GW116415	Null	Null	6.4	6.4	Null	Null	0.5	1821.0	North
14	GW114795	Monitoring	01/01/2010	3.5	3.5	Null	Null	Null	1953.9	South-west
15	GW114796	Monitoring	01/01/2010	3.5	3.5	Null	Null	Null	1956.9	South-west

Note: The use of the symbol "-" or "Null" indicates that no records were found.

Groundwater Bores Driller Lithology Details

Groundwater Bore ID	From Depth – To Depth (m)	Lithology	Distance (m)	Direction
GW105215	Null		967.9	North-east
GW114574	0m-0.2m Fill, Loose Beige, Sandy Gravelly Clay 0.2m-3.2m Fill, Soft To Firm B; Ack Gravelly Clay 3.2m-4.5m Soft Brown Slightly Gravelly Clay 4.5m-6m Soft, Light Grey Gravelly Clay 6m-7m Dark Grey Shale And Sandstone		993.4	South
GW114573	0m-0.2m Fill, Loose, Beige, Sandy Gravel Of Concrete 0.2m-3.2m Fill. Spft To Firm Black Gravelly Clay 3.2m-4.5m Soft Brown Slightly Gravelly Clay 4.5m-6m Soft Light Grey Gravelly Clay 6m-7m Dark Grey Shale And Sandstone		1011.4	South
GW114575	0m-0.2m Fill, Concrete 0.2m-0.4m Stiff Grey And Yellow Clay 0.4m-7.5m Grey Shale		1024.4	South
GW114569	0m-0.1m Bitumen / Roadbase 0.1m-0.3m Fill Gravelly Clay Grey/Brown, Soft, Low Plasticity 0.3m-1m Sandy Clay Yellow/Brown, Soft 1m-3m Sandstone Weathred Yellow/Brown, Hard 3m-5m Sandstone Weathred Yellow/Brown, Hard, Wet		1391.3	East
GW114567	0m-0.1m Bitumen / Roadbase 0.1m-0.3m Fill: Gravelly Clay, Grey/Brown, Soft 0.3m-1m Sandy Clay Yellow / Brown 1m-3m Sandstone Weathered, Yellow/Brown, Hard 3m-5m Sandstone Weathered, Yellow/Brown, Hard		1437.5	East
GW109519	Null		1450.2	West
GW109517	Null		1452.2	West
GW109518	Null		1453.3	West
GW109516	Null		1456.7	West
GW109699	0m-0.3m Topsoil 0.3m-3m Clay orange 3m-10.5m Clay grey 10.5m-24m Shale black 24m-27m Sandstone grey 27m-90m Sandstone white		1457.8	North-west
GW109515	Null		1467.0	West
GW114568	0m-0.1m Bitumen / Roadbase 0.1m-0.3m Fill, Gravelly Clay, Grey Brown, Soft Low Plasticity 0.3m-1m Sandy Clay Yellow/Brown, Soft 1m-3m Weathered Sandstone Yellow Brown Hard 3m-5m Weathered Sandstone Yellow Brown Hard		1477.7	East
GW116412	Null		1747.3	North
GW116411	Null		1763.0	North
GW116414	Null		1766.8	North
GW116410	Null		1793.3	North
GW116415	Null		1821.0	North
GW114795	Null		1953.9	South-west
GW114796	Null		1956.9	South-west

Note: The use of the symbol "-" or "Null" indicates that no records were found.

2.2 GROUNDWATER AND OTHER BORES

Map 2.2 (2000m Buffer)

Groundwater Restricted Use Zones

Name / Number	Address	Site History	Description	Distance (m)	Direction
Not identified	-	-	-	-	-

Groundwater Salinity

Class	Salinity Value	Source	Distance (m)	Direction
No Data	No Data	Sinclair Knight Merz	0.0	Onsite

Other Known Borehole Investigations (Coal Seam Gas (CSG), Petroleum Wells and Other Boreholes)

Borehole ID	Purpose	Project	Client/ License	Date Drilled	Depth (m)	Distance (m)	Direction
GT0000448	Intrusive Investigation	A collection of NSW geotechnical reports as part of the NSW Government Geotechnical Report Database Project (GGRD).	Drilling, Soil Sample Analysis, Standard Penetration Test (SPT) located at Report to Hughes Trueman Ludlow Pty Ltd -	01/01/1994	0.0	107.4	North-east
SRT_BH528	Borehole	Sydney Metro City and SouthWest	Sydney Metro	21/08/2016	20.0	194.1	North
TP535	Test Pit	GHD_Asset_Testing	Null	Null	0.0	212.8	North-west
TP534	Test Pit	GHD_Asset_Testing	Null	Null	0.0	213.3	North
BH03	Borehole	Campsie Station Car Park Upgrade	Sydney Trains	04/01/2015	6.0	224.2	North
BH02	Borehole	Campsie Station Car Park Upgrade	Sydney Trains	04/01/2015	3.0	232.5	North
BH04	Borehole	Campsie Station Car Park Upgrade	Sydney Trains	24/03/2015	12.0	234.8	North
SRT_BH529	Borehole	Sydney Metro City and SouthWest	Sydney Metro	12/08/2016	15.4	236.6	North
BH01	Borehole	Campsie Station Car Park Upgrade	Sydney Trains	03/01/2015	6.0	244.8	North
SRT_BH708	Borehole	Sydney Metro City and SouthWest	Sydney Metro	13/12/2016	33.0	271.1	North-west
8316-1	Borehole	Foundation investigation for cutting instability Campsie Station	Railcorp	14/06/2010	4.9	288.4	North-west
8316-2	Borehole	Foundation investigation for cutting instability Campsie Station	Railcorp	14/06/2010	6.0	298.4	North-west
TP536	Test Pit	GHD_Asset_Testing	Null	Null	0.0	305.8	North-west
8316-3	Borehole	Foundation investigation for cutting instability Campsie Station	Railcorp	14/06/2010	5.7	310.7	North-west
SRT_BH530	Borehole	Sydney Metro City and SouthWest	Sydney Metro	18/07/2016	14.0	373.1	West
GT0000447	Intrusive Investigation	A collection of NSW geotechnical reports as part of the NSW Government Geotechnical Report	Drilling, Soil Sample Analysis, Standard Penetration Test (SPT) located at	01/01/2005	0.0	382.0	North-west

Borehole ID	Purpose	Project	Client/ License	Date Drilled	Depth (m)	Distance (m)	Direction
		Database Project (GGRD).	Campsie Police Station : proposed redevelopo				
TP537	Test Pit	GHD_Asset_Testing	Null	Null	0.0	462.4	West
TP533	Test Pit	GHD_Asset_Testing	Null	Null	0.0	595.8	North-east
TP538	Test Pit	GHD_Asset_Testing	Null	Null	0.0	635.1	West
SRT_BH531	Borehole	Sydney Metro City and SouthWest	Sydney Metro	13/07/2016	12.4	638.4	West
GT0003079	Intrusive Investigation	A collection of NSW geotechnical reports as part of the NSW Government Geotechnical Report Database Project (GGRD).	Review existing documentation, Drilling, Push Tubes, Soil Sample Analysis located at Wangee School for Specific Purpo	01/01/2012	0.0	692.0	North-west
3177-5	Borehole	Belmore Underbridge Foundation Investigation	RailCorp	11/03/1993	4.3	867.3	West
3177-1	Borehole	Belmore Underbridge Foundation Investigation	RailCorp	11/03/1993	2.7	870.7	West
3177-4	Borehole	Belmore Underbridge Foundation Investigation	RailCorp	11/03/1993	6.4	877.0	West
3177-2	Borehole	Belmore Underbridge Foundation Investigation	RailCorp	11/03/1993	2.4	878.2	West
3177-3	Borehole	Belmore Underbridge Foundation Investigation	RailCorp	11/03/1993	2.3	878.2	West
MW4	Borehole	BP Service Station Canterbury	BP Australia Pty Ltd	15/11/2011	3.0	880.8	East
MW2	Borehole	BP Service Station Canterbury	BP Australia Pty Ltd	15/11/2011	4.0	900.0	East
SB13	Borehole	BP Service Station Canterbury	BP Australia Pty Ltd	15/11/2011	1.3	908.1	East
SB12	Borehole	BP Service Station Canterbury	BP Australia Pty Ltd	15/11/2011	1.3	908.1	East
SB11	Borehole	BP Service Station Canterbury	BP Australia Pty Ltd	15/11/2011	1.3	908.1	East
MW1	Borehole	BP Service Station Canterbury	BP Australia Pty Ltd	15/11/2011	5.0	914.2	East
SRT_BH532	Borehole	Sydney Metro City and SouthWest	Sydney Metro	20/07/2016	15.1	919.2	West
MW5	Borehole	BP Service Station Canterbury	BP Australia Pty Ltd	15/11/2011	4.0	919.5	East
SRT_BH527	Borehole	Sydney Metro City and SouthWest	Sydney Metro	30/07/2016	10.6	925.0	North-east
MW3	Borehole	BP Service Station Canterbury	BP Australia Pty Ltd	15/11/2011	4.0	926.2	East
R487_BH6	Borehole	Renewal of Rail Bridge at Wairoa St, Canterbury	Tierney & Partners	01/02/1993	4.7	974.7	North-east
R487_BH5	Borehole	Renewal of Rail Bridge at Wairoa St, Canterbury	Tierney & Partners	01/02/1993	2.8	975.5	North-east
R487_BH4	Borehole	Renewal of Rail Bridge at Wairoa St, Canterbury	Tierney & Partners	01/02/1993	4.2	978.0	North-east
R487_BH1	Borehole	Renewal of Rail Bridge at Wairoa St, Canterbury	Tierney & Partners	01/02/1993	5.8	987.7	North-east

Borehole ID	Purpose	Project	Client/ License	Date Drilled	Depth (m)	Distance (m)	Direction
R487_BH2	Borehole	Renewal of Rail Bridge at Wairoa St, Canterbury	Tierney & Partners	01/02/1993	3.0	996.9	North-east
R487_BH3	Borehole	Renewal of Rail Bridge at Wairoa St, Canterbury	Tierney & Partners	01/02/1993	3.5	997.4	North-east
SW0189_BH13	Borehole	Cooks River Bank Naturalisation Geotechnical Investigation and Interpretive Report	Sydney Water	01/12/2011	4.7	1018.0	North
BH13	Borehole	SydneyMetroDatabase	Null	Null	4.7	1018.0	North
TP204	Test Pit	SydneyMetroDatabase	Null	Null	3.0	1021.0	North
TP205	Test Pit	SydneyMetroDatabase	Null	Null	3.0	1031.0	North
SW0189_BH14	Borehole	Cooks River Bank Naturalisation Geotechnical Investigation and Interpretive Report	Sydney Water	01/12/2011	5.0	1038.2	North
BH14	Borehole	SydneyMetroDatabase	Null	Null	5.0	1038.2	North
TP532	Test Pit	GHD_Asset_Testing	Null	Null	0.0	1045.5	North-east
SRT_BH526	Borehole	Sydney Metro City and SouthWest	Sydney Metro	31/07/2016	15.6	1057.3	North-east
SW0189_BH12	Borehole	Cooks River Bank Naturalisation Geotechnical Investigation and Interpretive Report	Sydney Water	01/12/2011	5.0	1062.7	North
BH12	Borehole	SydneyMetroDatabase	Null	Null	5.0	1062.7	North
SW0189_BH15	Borehole	Cooks River Bank Naturalisation Geotechnical Investigation and Interpretive Report	Sydney Water	01/12/2011	4.5	1069.9	North
BH15	Borehole	SydneyMetroDatabase	Null	Null	4.5	1069.9	North
BH10	Borehole	SydneyMetroDatabase	Null	Null	4.5	1072.9	North-west
SW0189_BH10	Borehole	Cooks River Bank Naturalisation Geotechnical Investigation and Interpretive Report	Sydney Water	01/12/2011	4.5	1072.9	North-west
TP202	Test Pit	SydneyMetroDatabase	Null	Null	3.0	1077.4	North-west
BH09	Borehole	SydneyMetroDatabase	Null	Null	4.6	1082.2	North
SW0189_BH09	Borehole	Cooks River Bank Naturalisation Geotechnical Investigation and Interpretive Report	Sydney Water	01/12/2011	4.6	1082.2	North
SW0189_BH19	Borehole	Cooks River Bank Naturalisation Geotechnical Investigation and Interpretive Report	Sydney Water	01/12/2011	5.0	1099.3	North-west
BH19	Borehole	SydneyMetroDatabase	Null	Null	5.0	1099.3	North-west

Borehole ID	Purpose	Project	Client/ License	Date Drilled	Depth (m)	Distance (m)	Direction
TP203	Test Pit	SydneyMetroDatabase	Null	Null	3.0	1105.1	North
SW0189_BH18	Borehole	Cooks River Bank Naturalisation Geotechnical Investigation and Interpretive Report	Sydney Water	01/12/2011	4.4	1107.3	North
BH18	Borehole	SydneyMetroDatabase	Null	Null	4.4	1107.3	North
TP201	Test Pit	SydneyMetroDatabase	Null	Null	3.0	1108.3	North
BH17	Borehole	SydneyMetroDatabase	Null	Null	5.0	1117.9	North
SW0189_BH17	Borehole	Cooks River Bank Naturalisation Geotechnical Investigation and Interpretive Report	Sydney Water	01/12/2011	5.0	1117.9	North
288-7	Borehole	Canterbury - Cooks River Underbridge Investigation - Bankstown Sydnenham Line 10.460 km	RailCorp	27/04/1992	6.9	1136.7	East
288-4	Borehole	Canterbury - Cooks River Underbridge Investigation - Bankstown Sydnenham Line 10.460 km	RailCorp	27/04/1992	11.8	1146.7	East
288-6	Borehole	Canterbury - Cooks River Underbridge Investigation - Bankstown Sydnenham Line 10.460 km	RailCorp	27/04/1992	13.2	1148.9	East
288-5	Borehole	Canterbury - Cooks River Underbridge Investigation - Bankstown Sydnenham Line 10.460 km	RailCorp	27/04/1992	14.8	1159.2	East
288-1	Borehole	Canterbury - Cooks River Underbridge Investigation - Bankstown Sydnenham Line 10.460 km	RailCorp	27/04/1992	11.0	1162.8	East
288-8	Borehole	Canterbury - Cooks River Underbridge Investigation - Bankstown Sydnenham Line 10.460 km	RailCorp	27/04/1992	5.2	1170.0	East
288-3	Borehole	Canterbury - Cooks River Underbridge Investigation - Bankstown Sydnenham Line 10.460 km	RailCorp	27/04/1992	11.7	1180.5	East
SRT_BH525	Borehole	Sydney Metro City and SouthWest	Sydney Metro	31/07/2016	15.0	1181.5	East
288-2	Borehole	Canterbury - Cooks River Underbridge Investigation - Bankstown Sydnenham Line 10.460 km	RailCorp	27/04/1992	12.0	1182.3	East
TP539	Test Pit	GHD_Asset_Testing	Null	Null	0.0	1200.8	West
TP540	Test Pit	GHD_Asset_Testing	Null	Null	0.0	1201.2	West
TP531	Test Pit	GHD_Asset_Testing	Null	Null	0.0	1218.4	East

Borehole ID	Purpose	Project	Client/ License	Date Drilled	Depth (m)	Distance (m)	Direction
BH3	Borehole	SydneyMetroDatabase	Null	Null	6.1	1241.4	East
BH1	Borehole	SydneyMetroDatabase	Null	Null	3.7	1283.1	East
TP541	Test Pit	GHD_Asset_Testing	Null	Null	0.0	1314.5	West
TP530	Test Pit	GHD_Asset_Testing	Null	Null	0.0	1324.8	East
SRT_BH534	Borehole	Sydney Metro City and SouthWest	Sydney Metro	30/07/2016	10.0	1343.4	West
BH01	Borehole	SydneyMetroDatabase	Null	Null	5.0	1381.5	North-west
SW0189_BH01	Borehole	Cooks River Bank Naturalisation Geotechnical Investigation and Interpretive Report	Sydney Water	01/12/2011	5.0	1381.5	North-west
R472_CTS03	Borehole	Southern Line	Railcorp	21/06/1945	27.1	1388.9	North
R180_42_CTS03	Null	NWRL_R180_Southern Line	Railcorp	21/06/1945	27.1	1388.9	North
TP542	Test Pit	GHD_Asset_Testing	Null	Null	0.0	1399.0	West
BH09	Borehole	Canterbury Zone Sub-Transmission Station Redevelopment	Energy Australia	10/11/2009	1.5	1402.2	South-east
TP529	Test Pit	GHD_Asset_Testing	Null	Null	0.0	1403.5	East
BH02	Borehole	Canterbury Zone Sub-Transmission Station Redevelopment	Energy Australia	10/11/2009	10.1	1409.1	South-east
BH02A	Borehole	Canterbury Zone Sub-Transmission Station Redevelopment	Energy Australia	10/11/2009	0.4	1409.1	South-east
BH03	Borehole	Canterbury Zone Sub-Transmission Station Redevelopment	Energy Australia	10/11/2009	5.5	1414.7	South-east
SRT_BH533	Borehole	Sydney Metro City and SouthWest	Sydney Metro	31/07/2016	10.2	1415.8	West
TP305	Test Pit	SydneyMetroDatabase	Null	Null	3.0	1417.9	North-west
SW0189_BH06	Borehole	Cooks River Bank Naturalisation Geotechnical Investigation and Interpretive Report	Sydney Water	01/12/2011	6.0	1420.6	North-west
BH06	Borehole	SydneyMetroDatabase	Null	Null	6.0	1420.6	North-west
TP302	Test Pit	SydneyMetroDatabase	Null	Null	3.0	1420.8	North-west
BH1	Borehole	SydneyMetroDatabase	Null	Null	14.2	1424.7	North-east
BH08	Borehole	Canterbury Zone Sub-Transmission Station Redevelopment	Energy Australia	10/11/2009	1.5	1430.3	South-east
BH04	Borehole	Canterbury Zone Sub-Transmission Station Redevelopment	Energy Australia	10/11/2009	7.0	1442.1	South-east
BH07	Borehole	Canterbury Zone Sub-Transmission Station Redevelopment	Energy Australia	10/11/2009	1.5	1445.7	South-east
R531_GHD-BH1	Borehole	Canterbury Water and Wastewater Amplification	Sydney Water	03/06/2016	8.1	1447.5	East

Borehole ID	Purpose	Project	Client/ License	Date Drilled	Depth (m)	Distance (m)	Direction
TP304	Test Pit	SydneyMetroDatabase	Null	Null	3.0	1449.4	North-west
BH01A	Borehole	Canterbury Zone Sub-Transmission Station Redevelopment	Energy Australia	10/11/2009	0.4	1452.8	South-east
BH01	Borehole	Canterbury Zone Sub-Transmission Station Redevelopment	Energy Australia	10/11/2009	2.4	1452.8	South-east
BH2	Borehole	SydneyMetroDatabase	Null	Null	16.1	1453.5	North-east
BH12	Borehole	Canterbury Zone Sub-Transmission Station Redevelopment	Energy Australia	10/11/2009	4.0	1456.1	South-east
SW0189_BH03	Borehole	Cooks River Bank Naturalisation Geotechnical Investigation and Interpretive Report	Sydney Water	01/12/2011	4.3	1458.0	North-west
BH03	Borehole	SydneyMetroDatabase	Null	Null	4.3	1458.0	North-west
SRT_BH524	Borehole	Sydney Metro City and SouthWest	Sydney Metro	31/07/2016	10.9	1458.4	East
BH23	Borehole	SydneyMetroDatabase	Null	Null	5.0	1462.2	East
SW0189_BH23	Borehole	Cooks River Bank Naturalisation Geotechnical Investigation and Interpretive Report	Sydney Water	01/12/2011	5.0	1462.2	East
TP301	Test Pit	SydneyMetroDatabase	Null	Null	3.0	1464.9	North-west
SW0189_BH08	Borehole	Cooks River Bank Naturalisation Geotechnical Investigation and Interpretive Report	Sydney Water	01/12/2011	4.7	1466.5	North-west
BH08	Borehole	SydneyMetroDatabase	Null	Null	4.7	1466.5	North-west
BH05	Borehole	Canterbury Zone Sub-Transmission Station Redevelopment	Energy Australia	10/11/2009	1.5	1466.7	South-east
SRT_BH523	Borehole	Sydney Metro City and SouthWest	Sydney Metro	04/07/2016	15.1	1468.5	East
BH10	Borehole	Canterbury Zone Sub-Transmission Station Redevelopment	Energy Australia	10/11/2009	1.5	1471.0	South-east
R531_GHD-BH2	Borehole	Canterbury Water and Wastewater Amplification	Sydney Water	02/06/2016	10.1	1477.2	East
BH11	Borehole	Canterbury Zone Sub-Transmission Station Redevelopment	Energy Australia	10/11/2009	1.5	1485.1	South-east
BH06	Borehole	Canterbury Zone Sub-Transmission Station Redevelopment	Energy Australia	10/11/2009	2.0	1488.9	South-east
BH3	Borehole	SydneyMetroDatabase	Null	Null	16.4	1492.7	North-east
TP303	Test Pit	SydneyMetroDatabase	Null	Null	3.0	1497.9	North-west
R531_GHD-BH3	Borehole	Canterbury Water and Wastewater Amplification	Sydney Water	03/06/2016	10.2	1522.7	East
SW0189_BH04	Borehole	Cooks River Bank Naturalisation Geotechnical	Sydney Water	01/12/2011	3.3	1523.6	North-west

Borehole ID	Purpose	Project	Client/ License	Date Drilled	Depth (m)	Distance (m)	Direction
		Investigation and Interpretive Report					
BH04	Borehole	SydneyMetroDatabase	Null	Null	3.3	1523.6	North-west
PAI_SB22	Borehole	Contamination and Geotech Investigation for the Summer Hill to Earlwood Cable Project	Ausgrid	25/11/2016	1.5	1528.3	South-east
BH4	Borehole	SydneyMetroDatabase	Null	Null	12.9	1530.2	North-east
TP101	Test Pit	SydneyMetroDatabase	Null	Null	3.0	1539.7	East
SW0189_BH21	Borehole	Cooks River Bank Naturalisation Geotechnical Investigation and Interpretive Report	Sydney Water	01/12/2011	6.0	1543.3	East
BH21	Borehole	SydneyMetroDatabase	Null	Null	6.0	1543.3	East
TP102	Test Pit	SydneyMetroDatabase	Null	Null	3.0	1549.5	East
TP103	Test Pit	SydneyMetroDatabase	Null	Null	3.0	1560.9	East
BH5	Borehole	SydneyMetroDatabase	Null	Null	14.3	1563.3	North-east
PAI_SB21	Borehole	Contamination and Geotech Investigation for the Summer Hill to Earlwood Cable Project	Ausgrid	25/11/2016	1.5	1563.9	South-east
R531_GHD-BH4	Borehole	Canterbury Water and Wastewater Amplification	Sydney Water	02/06/2016	10.0	1576.6	East
BH1	Borehole	SydneyMetroDatabase	Null	Null	6.3	1586.4	North-east
BH7	Borehole	SydneyMetroDatabase	Null	Null	11.3	1597.5	North-east
TP528	Test Pit	GHD_Asset_Testing	Null	Null	0.0	1600.2	East
BH2	Borehole	SydneyMetroDatabase	Null	Null	6.3	1610.9	North-east
PAI_SB1	Borehole	Contamination and Geotech Investigation for the Summer Hill to Earlwood Cable Project	Ausgrid	25/11/2016	1.4	1622.3	South-east
TP104	Test Pit	SydneyMetroDatabase	Null	Null	3.0	1623.6	East
BH6	Borehole	SydneyMetroDatabase	Null	Null	16.2	1628.2	North-east
SW0189_BH24	Borehole	Cooks River Bank Naturalisation Geotechnical Investigation and Interpretive Report	Sydney Water	01/12/2011	5.0	1635.4	East
BH24	Borehole	SydneyMetroDatabase	Null	Null	5.0	1635.4	East
BH7	Borehole	SydneyMetroDatabase	Null	Null	7.0	1669.2	North-east
R472_CTS14	Borehole	Southern Line	Railcorp	21/06/1945	32.9	1678.9	North-east
R180_42_CTS14	Borehole	NWRL_R180_Southern Line	Railcorp	21/06/1945	32.9	1678.9	North-east

Borehole ID	Purpose	Project	Client/ License	Date Drilled	Depth (m)	Distance (m)	Direction
BH6	Borehole	SydneyMetroDatabase	Null	Null	7.0	1684.2	North-east
SRT_BH707	Borehole	Sydney Metro City and SouthWest	Sydney Metro	15/12/2016	10.2	1684.3	East
TP105	Test Pit	SydneyMetroDatabase	Null	Null	3.0	1694.1	East
BH3	Borehole	SydneyMetroDatabase	Null	Null	2.5	1720.2	North-east
SW0189_BH25	Borehole	Cooks River Bank Naturalisation Geotechnical Investigation and Interpretive Report	Sydney Water	01/12/2011	7.5	1722.1	East
BH25	Borehole	SydneyMetroDatabase	Null	Null	7.5	1722.1	East
MW 3	Borehole	Georges River Road Depot	Sydney Water	23/04/2003	6.0	1745.9	North-west
R531_GHD-BH5	Borehole	Canterbury Water and Wastewater Amplification	Sydney Water	01/06/2016	10.0	1749.2	East
MW 2	Borehole	Georges River Road Depot	Sydney Water	23/04/2003	6.0	1781.4	North-west
MW 1	Borehole	Georges River Road Depot	Sydney Water	24/04/2003	9.4	1801.6	North-west
PAI_SB2B	Borehole	Contamination and Geotech Investigation for the Summer Hill to Earlwood Cable Project	Ausgrid	25/11/2016	1.5	1818.0	South-east
PAI_SB2	Borehole	Contamination and Geotech Investigation for the Summer Hill to Earlwood Cable Project	Ausgrid	25/11/2016	0.3	1818.0	South-east
PAI_SB2A	Borehole	Contamination and Geotech Investigation for the Summer Hill to Earlwood Cable Project	Ausgrid	25/11/2016	0.8	1818.0	South-east
R531_GHD-BH6	Borehole	Canterbury Water and Wastewater Amplification	Sydney Water	01/06/2016	2.5	1827.8	East
TP543	Test Pit	GHD_Asset_Testing	Null	Null	0.0	1850.6	West
TP527	Test Pit	GHD_Asset_Testing	Null	Null	0.0	1891.2	East
SRT_BH520	Borehole	Sydney Metro City and SouthWest	Sydney Metro	30/06/2016	15.0	1919.4	East
R531_GHD-BH7	Borehole	Canterbury Water and Wastewater Amplification	Sydney Water	02/06/2016	1.6	1944.7	East
PAI_SB4A	Borehole	Contamination and Geotech Investigation for the Summer Hill to Earlwood Cable Project	Ausgrid	25/11/2016	0.6	1956.0	East
PAI_SB4	Borehole	Contamination and Geotech Investigation for the Summer Hill to Earlwood Cable Project	Ausgrid	25/11/2016	0.6	1956.0	East
PAI_SB4B	Borehole	Contamination and Geotech Investigation for the Summer Hill to Earlwood Cable Project	Ausgrid	25/11/2016	1.5	1956.0	East

Borehole ID	Purpose	Project	Client/ License	Date Drilled	Depth (m)	Distance (m)	Direction
SRT_BH535	Borehole	Sydney Metro City and SouthWest	Sydney Metro	22/07/2016	11.9	1959.9	West
PAI_SB3	Borehole	Contamination and Geotech Investigation for the Summer Hill to Earlwood Cable Project	Ausgrid	25/11/2016	0.6	1984.5	East
PAI_SB3A	Borehole	Contamination and Geotech Investigation for the Summer Hill to Earlwood Cable Project	Ausgrid	25/11/2016	1.5	1984.5	East

Note: The use of the symbol "-" or "Null" indicates that no records were found.



Section 3 Environmental Registers, Licences and Incidents



3.1 CONTAMINATED LAND PUBLIC REGISTER

Map 3.1 (1000m Buffer)

Contaminated Sites

Register Type	Site Name	Address	Description	Details	Distance (m)	Direction
Record of Notices	Budget Petroleum and adjacent property	403 Canterbury Road and 1 Una STREET, CAMPSIE	Service Station	Notices relating to this site (1 current)	554.8	South-east
Sites Notified as Contaminated	Budget Petroleum and adjacent property	403 Canterbury Road and 1 Una STREET CAMPSIE	Service Station	Contamination currently regulated under CLM Act	554.8	South-east
Record of Notices	Former Sunbeam factory	60 Charlotte STREET, CAMPSIE	Other Industry	Notices relating to this site (4 former)	871.9	South
Sites Notified as Contaminated	Former Sunbeam factory	60 Charlotte STREET, CAMPSIE	Other Industry	Contamination formerly regulated under the CLM Act	871.9	South

If the record does not contain a complete street address and/or cannot be located, the records' geographic location will be approximated and reported as being within the surrounding area.

Table 3.1.1 Contaminated Land Public Register		
State	Regulatory Body	Information included in this search (by state)
ACT	EPA (Environment Protection Authority)	Contaminated Land Search Register of Contaminated Sites * (on request)
NSW	EPA (Environment Protection Authority)	Sites Notified as Contaminated

Table 3.1.1 Contaminated Land Public Register		
		Records of Notices
NT	EPA (Environment Protection Authority)	Contaminated Land Audit Pollution Abatement Notice
QLD	DES (Department of Environment and Science)	Contaminated Land Search (Environmental Management and Contaminated Land Registers) * (per lot)
SA	EPA (Environment Protection Authority)	Site Contamination Index Assessment Areas
TAS	EPA (Environment Protection Authority)	Regulated Sites and Premises Lutana and Parts of Hobarts Eastern Shore
VIC	EPA (Environment Protection Authority)	Priority Sites Register Pollution Abatement Notice
WA	DWER (Department of Water and Environmental Regulation)	Contaminated Sites Database

This search contains information retrieved from the relevant state authority, agency/department, or government authority that notifies and identifies contaminated land. The list only contains contaminated sites that the regulatory body is aware of or that have been notified by owners or occupiers as contaminated land. The sites are recorded on the register at various stages of the assessment and/or remediation process. If a site is not on the list, it does not necessarily mean the site is not contaminated.

3.2 LICENCES, APPROVALS & ASSESSMENTS

Map 3.2 (500m Buffer)

Licences

Licence N°	Type	Licence holder	Location Name	Premise Address	Activity	Dist. (m)*	Direct
10544	Surrendered	ALL CHROME SHOP PTY LTD	ALL CHROME SHOP PTY LTD 390 CANTERBURY ROAD, CANTERBURY, NSW, 2193	390 CANTERBURY ROAD, CANTERBURY, NSW 2193		653.4	South-east
7124	Delicensed	SYDNEY SOUTH WEST AREA HEALTH SERVICE	CANTERBURY HOSPITAL	CANTERBURY ROAD, CAMPSIE NSW	Hazardous, Industrial or Group A Waste Generation or Storage	664.0	South-west
6876	Surrendered	SUNBEAM CORPORATION LTD	SUNBEAM CORPORATION	TROY STREET, CAMPSIE, NSW 2194	Dangerous goods production General chemicals storage Hazardous, Industrial or Group A Waste Generation or Storage Metal coating	860.2	South
789	Surrendered	CANTERBURY CITY COUNCIL	CANTERBURY AQUATIC & FITNESS CENTRE PHILLIPS AVE, CANTERBURY, NSW, 2193	PHILLIPS AVE, CANTERBURY, NSW 2193	Miscellaneous licensed discharge to waters (at any time)	904.6	North-east
21247	Issued	METRO TRAINS SYDNEY PTY LTD	METRO TRAINS SYDNEY PTY LTD	SYDNEY METRO, ROUSE HILL, NSW, 2155	Railway infrastructure operations Rolling stock operations	Not mapped	Not mapped

Licence N°	Type	Licence holder	Location Name	Premise Address	Activity	Dist. (m)*	Direct
13421	Issued	UGL REGIONAL LINX PTY LTD	Country Regional Network	COUNTRY REGIONAL NETWORK, ORANGE, NSW, 2800	Railway infrastructure operations	Not mapped	Not mapped

If the record does not contain a complete street address and/or cannot be located, the records' geographic location will be approximated and reported as being within the surrounding area.

* Not mapped - Licences that are applied to larger areas and/or without specific definition; such as waterways, forests etc will still be identified in the search results but will not be show within the map.

Audits

N°	Type	Licence holder	Location Name	Premise Address	Activity	Dist. (m)*	Direction
Not identified	-	-	-	-	-	-	-

If the record does not contain a complete street address and/or cannot be located, the records' geographic location will be approximated and reported as being within the surrounding area.

Clean Up, Penalty Notices and Orders

N°	Type	Licence holder	Location Name	Premise Address	Details	Dist. (m)*	Direction
Not identified	-	-	-	-	-	-	-

If the record does not contain a complete street address and/or cannot be located, the records' geographic location will be approximated and reported as being within the surrounding area.

Table 3.2.1 Licences, Approvals & Assessments		
State	Regulatory Body	Information included in this search (by state)
ACT	EPA (Environment Protection Authority)	Environment Protection Authorisation Search Environment Protection Agreement Search
NSW	EPA (Environment Protection Authority)	POEO Public Register (Environment Protection licences, applications, notices, audits or pollution studies and reduction programs)
NT	EPA (Environment Protection Authority)	Environment Protection Licences
QLD	DES (Department of Environment and Science)	Environmental Authorities
SA	EPA (Environment Protection Authority)	Licences or Authorisations (Licences, Exemptions and Works Approvals) Environment Protection Orders (EPO) and Clean Up Orders (CUO)
TAS	EPA (Environment Protection Authority)	Regulated Premises
VIC	EPA (Environment Protection Authority)	Permissions Register (Operating Licence, Permit and Registration) Audit Reports
WA	DWER (Department of Water and Environmental Regulation)	Licences and Works Approvals

3.3a SITES REGULATED BY OTHER JURISDICTIONAL BODY

Map 3.3a (2000m Buffer)

Contaminated Legacy Areas

Site Name	Description	Distance (m)	Direction
Not identified	-	-	-

Includes known contaminated areas such as James Hardies Asbestos waste legacy areas, Pasmenco Smelter and Uranium processing site.

Defence, Military Sites and UXO Areas

Site name	Type*	Details	Distance (m)	Direction
Former Training Depot Belmore	Defence Area / Military Sites	Site is part of a list of training depots and drill halls that may have accommodated Reserve Units, and which have been sold during the period Financial Year 1995-96 to 2002.	1455.5	South-west

*RCIP (Regional Contamination Investigation Program). UXO (Unexploded Ordnance Areas)

Former Gasworks Sites

Site name	Description	Distance (m)	Direction
Not identified	-	-	-

PFAS Sites

Site name	Type	Details	Distance (m) *	Direction
Not identified	-	-	-	-

3.3b OTHER POTENTIAL HAZARD SOURCES

Map 3.3b (500m Buffer)

Mines and Quarries (current and historical)

Site name	Description	Status	Distance (m)	Direction
Not identified	-	-	-	-

Landfills (current and historical)

Site name	Description	Status	Distance (m)	Direction
Not identified	-	-	-	-

National Pollutant Inventory (NPI)

Facility name	Address	Primary ANZSIC Class	Latest report	Distance (m)	Direction
Not identified	-	-	-	-	-



Section 4 Potentially Contaminated Areas



4.1 POTENTIALLY CONTAMINATING ACTIVITIES

Map 4.1 (200m Buffer)

Liquid Fuel Facilities

Site name	Category	Description	Address	Status*	Dist. (m)*	Direction
Not identified	-	-	-	-	-	-

Waste Management Facilities & Recycling Centres

Site name	Category	Description	Address	Status*	Dist. (m)*	Direction
Not identified	-	-	-	-	-	-

***Status:** Information is current as when this report was created.

The operational status of the business is determined using the available data sources and does not indicate real-time conditions at the site.

Current: business is operating on the day this report was issued.

Former: business that have been closed or discontinued within 2 years from the date of this report.

Liquid Fuel Facilities Datasets, representing the spatial locations of liquid fuel depots, refineries, terminals and petrol stations present in the Australian Government National Liquid Fuel Facilities Dataset and Petrol stations identified by Land Insights. Waste Management Facilities, representing the spatial locations of reprocessing facilities, transfer stations and landfills present in the Australian Government National Waste Management Facilities Dataset and Waste/Recycling facilities identified by Land Insights.

A more comprehensive list of all Potentially Contaminating Activities is available in the Due Diligence Insight report.

4.2 HISTORICAL BUSINESS DIRECTORIES

(not mapped)

YEAR	Activity	Name	Address	Positional accuracy	Distance (m)	Direction
1965	Fruiterers & Greengrocers	Ferraro S D	28,Amy,NSW	Address	0.0	Onsite
1965	Fruiterers & Greengrocers	Hucker Alfred	3,Campsie,NSW	Address	0.0	Onsite
1970	CHEMISTS— PHARMACEUTICAL	Barden, R. S.,	16 Amy St.,NSW	Address	0.0	Onsite
2005	Footwear Repairs	Mister Minit Aust Pty Ltd, Campsie	29 Campsie Cntr,CAMPSIE,NSW,2194	Address	0.0	Onsite
2005	Handbags--Retail & Repairs	J.C Handbag	Shop 2, 14-28 Amy St,CAMPSIE,NSW,2194	Address	0.0	Onsite
2005	Fish & Seafoods--Retail	J & T Seafoods	Shop 11 Campsie Centre Amy St,CAMPSIE,NSW,2194	Address	0.0	Onsite
2005	Kitchenware--Retail	Homeware World Co	14 Amy St,CAMPSIE,NSW,2194	Address	0.0	Onsite
2010	Bakeries	Michel's Patisserie	Shop 8 14-28 Amy St CAMPSIE 2194 NSW	Address	0.0	Onsite
2010	Photography Processing Services - Domestic	Campsie Instant Photo	23/ 14 Amy St CAMPSIE 2194 NSW	Address	0.0	Onsite
2010	Mobile Telephones - Service & Repairs	Telechoice	Shop 19A 14-28 Amy St CAMPSIE 2194 NSW	Address	0.0	Onsite
2010	Chemists - Retail Pharmacies	Jonson's Campsie Centre Pharmacy	21 Campsie Cntr CAMPSIE 2194 NSW	Address	0.0	Onsite
2015	Photography Processing Services - Domestic	Campsie Instant Photo	23/ 14 Amy St Campsie NSW 2194	Address	0.0	Onsite
2015	Chemists - Retail Pharmacies	Chemist Warehouse Campsie S/C	Shop 21 Campsie Centre 14-28 Amy St Campsie NSW 2194	Address	0.0	Onsite
2015	Greengrocers & Fruiterers	Growers Fruit Market	Campsie Cntr 14-28 Amy St Campsie NSW 2194	Address	8.2	South-east
2015	Chemists - Retail Pharmacies	My Chemist Campsie	Shop 21 14-28 Amy St Campsie NSW 2194	Address	13.5	North-west
2015	Bakeries	Michel's Patisserie	Shop 8 The Campsie Centre 14- 28 Amy St Campsie NSW 2194	Address	13.5	North-west
1965	Carriers—Light	Evans E R	63,Evaline,NSW	Address	17.5	South-east
1970	Motor Car Washing & Polishing	Campsie Car Wash	61 Evaline Street,Campsie,NSW	Address	17.5	South-east
1970	Motor Service Stations	Amoco Aust Pty Ltd	61 Evaline Street,Campsie,NSW	Address	17.5	South-east
1980	Motor Car Washing & Polishing	Campsie Car Wash	61 Evaline St.,Campsie,NSW	Address	17.5	South-east
1980	Motor Service Stations & Garages	Amoco Aust Ltd	61 Evaline St.,Campsie,NSW	Address	17.5	South-east
1990	Motor Car & Truck Cleaning Services	Campsie Car Wash	61 Evaline,Campsie,NSW	Address	17.5	South-east
1990	Motor Service Stations & Garages	BP Australia Ltd	61 Evaline Street,Campsie,NSW	Address	17.5	South-east
1965	Jewellers—Mfrg. &/or W'sale	Neal N W	12,Amy,NSW	Address	21.8	North-east
2010	Mobile Telephones - Service & Repairs	J Z Brothers	Shp2/ 256 Beamish St CAMPSIE 2194 NSW	Address	25.7	North-east

YEAR	Activity	Name	Address	Positional accuracy	Distance (m)	Direction
2010	Furniture Storage & Removals	A Better Removals	Shop 5 256 Beamish St CAMPSIE 2194 NSW	Address	25.7	North-east
1950	Clothing - Frocks Mfrs.	Mansour L	252 Beamish Street,Campsie,NSW	Address	28.9	North-east
1980	Floor Coverings	Waratah Floor Coverings	250 Beamish St.,Campsie,NSW	Address	28.9	North-east
1940	Clothing - Children's &/or Women's	Wendy Ladies' &Children's Outfitters	256 Beamish Street,Campsie,NSW	Address	30.6	North-east
1965	Fruiterers & Greengrocers	Geneid M	258,Beamish,NSW	Address	30.6	North-east
2005	Photographic Processing Services	Campsie Photographic Services	6/256-258 Beamish St,CAMPSIE,NSW,2194	Address	30.6	North-east
2005	Furniture Removals & Storage	A Better Removals & Storage	Shop 5, 256-258 Beamish St,CAMPSIE,NSW,2194	Address	30.6	North-east
2005	Electrical Appliances--Retail	Stormtech Second Price	256 Beamish St,CAMPSIE,NSW,2194	Address	30.6	North-east
2010	Electronic Equipment - M/factrs &/or W/salers	Value Electronics	Shop 5/ 256 Beamish St CAMPSIE 2194 NSW	Address	30.6	North-east
1940	Photographers - General	McEnnally N H	240 Beamish Street,Campsie,NSW	Address	32.0	North-east
1940	Photographers - Portrait	MCENNALLY N H	240 Beamish Street,Campsie,NSW	Address	32.0	North-east
1950	Photographers - Portrait	McEnnally N H	240 Beamish,Campsie,NSW	Address	32.0	North-east
1950	Photographers - General	McEnnally N H	240 Beamish Street,Campsie,NSW	Address	32.0	North-east
1965	Photographers—Marine	Aquafoto	240,Beamish,NSW	Address	32.0	North-east
1965	Photographers—Commercial	MANUALLY N H	240,Beamish,NSW	Address	32.0	North-east
1965	Photographers—Commercial	Technique Colour Service	240,Beamish,NSW	Address	32.0	North-east
1965	Photographers—General	McEnnally N H	240,Beamish,NSW	Address	32.0	North-east
1965	Builders & Contractors	Practical Developments Pty Ltd	240,Beamish,NSW	Address	32.0	North-east
1965	Blue Prints	M ENNALLY N H	240,Beamish,NSW	Address	32.0	North-east
1965	Photographers—Portraits	MCENNALLY N H	240,Beamish,NSW	Address	32.0	North-east
1965	Photographic Colour Processing	TECHNIQUE COLOUR SERVICE	240,Beamish,NSW	Address	32.0	North-east
1970	PHOTOGRAPHERS—PORTRAIT	McEnnally, N. H.,	240 Beamish St.,Campsie	Address	32.0	North-east
1970	Photographic Colour Processing	Technique Colour Service	240 Beamish Street,Campsie,NSW	Address	32.0	North-east
1970	Photographers-Commercial & Industrial	P.J. Photographics Pty Ltd	240 Beamish Street,Campsie,NSW	Address	32.0	North-east
1940	Chemists - Pharmaceutical	Canterbury District United Friendly SocyDispensary	246 Beamish Street,Campsie,NSW	Address	32.7	North-east
1970	HANDBAG/GLOVE SPECIALISTS	Kays Handbags,	246 Beamish St.,Campsie	Address	32.7	North-east

YEAR	Activity	Name	Address	Positional accuracy	Distance (m)	Direction
1980	Chemists - Pharmaceutical	Central Pharmacy Campsie	246 Beamish St.,Campsie,NSW	Address	32.7	North-east
2010	Chemists - Retail Pharmacies	Campsie Pharmacy	9 Amy St CAMPSIE 2194 NSW	Address	33.2	North
1950	Stores - General	Verran J D	238 Beamish Street,Campsie,NSW	Address	35.8	North-east
1980	Hardware - Retail	Watson (Campsie) Pty Ltd	238 Beamish St.,Campsie,NSW	Address	35.8	North-east
1965	Hardware—Retail	Regents Park Hardware	36,Amy,NSW	Address	36.8	South-west
1965	Fruiterers & Greengrocers	Garrick D C&W H	242,Beamish,NSW	Address	38.0	North-east
1970	MIXED BUSINESSES	Angelos Food Market,	242 Beamish St.,Campsie	Address	38.0	North-east
1965	Bakers	Maltex Bakery	268,Beamish,NSW	Address	38.3	South-east
1970	DRY CLEANERS, PRESSERS/ DYERS	Peter Pan,	266 Beamish St.,Campsie	Address	38.3	South-east
2010	Chemists - Retail Pharmacies	Georges Pharmacy	266 Beamish St CAMPSIE 2194 NSW	Address	38.7	South-east
1965	Chemists—Pharmaceutical	Central Pharmacy	248,Beamish,NSW	Address	39.2	North-east
1970	CHEMISTS—PHARMACEUTICAL	Campsie Central Pharmacy,	248 Beamish St.,Campsie	Address	39.2	North-east
1965	Grocers—Retail	Coles Food Markets Pty Ltd	234,Beamish,NSW	Address	39.6	North-east
1940	Cake & Pudding Mfrs	O'Connell G C	232 Beamish Street,Campsie,NSW	Address	42.0	North-east
2015	Chemists - Retail Pharmacies	Georges Pharmacy	266 Beamish St Campsie NSW 2194	Address	43.1	South-east
2015	Chemists - Retail Pharmacies	Campsie Pharmacy	9 Amy St Campsie NSW 2194	Address	47.9	North
1965	Carriers—Heavy	O.M.&G.T. Pty Ltd	71,Evaline,NSW	Address	53.0	South-west
1970	Carriers Heavy	OM & GT Pty Ltd	71 Evaline,Campsie,NSW	Address	53.0	South-west
1940	Grocers - Retail	MORAN&GATO (NSW) PTY LTD	224 Beamish Street,Campsie,NSW	Address	54.4	North-east
1965	Grocers—Retail	MORAN & CATO (NSW) PTY LTD	224,Beamish,NSW	Address	54.4	North-east
2005	Fruiterers & Greengrocers	The World Of Fruit	224 Beamish St,CAMPSIE,NSW,2194	Address	54.4	North-east
2010	Bakeries	Hong Loc Hot Bread	228 Beamish St CAMPSIE 2194 NSW	Address	54.4	North-east
2015	Bakeries	Hong Loc Hot Bread	228 Beamish St Campsie NSW 2194	Address	54.6	North-east
1940	Boot & Shoe Requisites	Bull Dog Products The	7 Dans Coner,Campsie,NSW	Address	56.1	East
1950	Boot & Shoe Requisites	Bull Dog Products The	7 Dans Cnr,Campsie,NSW	Address	56.1	East
1965	Gates & Fencing	Jones L N	115,Campsie,NSW	Address	56.1	East
1965	Engineers—Manufacturing	Creswell Engineering Co	39,Campsie,NSW	Address	56.1	East
1930	Furriers	Moon HG	272 Beamish Street,Campsie,NSW	Address	56.5	South-east
1950	Dry Cleaners and Dyers	Lawrence Dry Cleaners	272 Beamish Street,Campsie,NSW	Address	56.5	South-east

YEAR	Activity	Name	Address	Positional accuracy	Distance (m)	Direction
1965	Umbrellas—Repairs	JACKSON P&D	272,Beamish,NSW	Address	56.5	South-east
2015	Greengrocers & Fruiterers	The World of Fruit	224-226 Beamish St Campsie NSW 2194	Address	57.3	North-east
2010	Greengrocers & Fruiterers	World Of Fruit The	224-226 Beamish St CAMPSIE 2194 NSW	Address	57.4	North-east
1965	Carriers—Heavy	Samuei V J	70,Evaline,NSW	Address	59.0	South
2005	Recycled Clothing	Salvation Army Family Store, Campsie	68 Evaline St,CAMPSIE,NSW,2194	Address	60.1	South
1950	Carriers-Light	Abbott A R	27 Amy,Campsie,NSW	Address	69.3	West
1965	Builders & Contractors	ALEXANDER'S BUILDING & DEVELOPMENT CO PTY LTD	295a,Beamish,NSW	Address	72.7	East
2005	Optical Prescription Dispensers	Optical Vision Centre, Campsie	295 Beamish St,CAMPSIE,NSW,2194	Address	72.7	East
1970	HANDBAG/GLOVE SPECIALISTS	Finlay's, L. H.,	293 Beamish St.,Campsie	Address	72.8	East
1970	MIXED BUSINESSES	Domicillo, A.,	278 Beamish St.,Campsie	Address	73.5	South-east
1940	Grocers - Retail	McILRATH'S PTY LTD	216 Beamish Street,Campsie,NSW	Address	81.9	North-east
1965	Grocers—Retail	WOOLWORTHS LTD	216,Beamish,NSW	Address	81.9	North-east
1940	Chemists - Pharmaceutical	Holden A W	303 Beamish Street,Campsie,NSW	Address	84.6	East
1950	Chemists - Pharmaceutical	Anthony R E	303 Beamish Street,CAMPSIE,NSW	Address	84.6	East
1965	Chemists—Pharmaceutical	Willcox W R	303,Beamish,NSW	Address	84.6	East
1970	CHEMISTS—PHARMACEUTICAL	Willcox, W. R.,	303 Beamish St.,Campsie	Address	84.6	East
1980	Chemists - Pharmaceutical	Willcox Pharmacy	303 Beamish St.,Campsie,NSW	Address	84.6	East
1950	Radio Repairs & Service	Prosser T	305 Beamish Street,Campsie,NSW	Address	85.5	East
1965	Textile Merchants &/or Mills	Rosemary Fabrics	305,Beamish,NSW	Address	85.5	East
2005	Dress Materials	Lien Hung Fabric	305 Beamish St,CAMPSIE,NSW,2194	Address	85.5	East
1940	Radio Repairs & Service	Direct Radio&Voice Recording	313 Beamish Street,Campsie,NSW	Address	88.2	South-east
1940	Laundries	Sunshine Laundry	313 Beamish Street,Campsie,NSW	Address	88.2	South-east
1950	Boot Repairers	Fletcher A G	313 Beamish Street,Campsie,NSW	Address	88.2	South-east
1950	Laundries	Sunshine Laundry	313 Beamish,Campsie,NSW	Address	88.2	South-east
1965	Hardware—Retail	Mac's Hardware	317,Beamish,NSW	Address	88.2	South-east
1940	Signwriters	KEECH SIGNS	284 Beamish Street,Campsie,NSW	Address	88.4	South-east
1940	Wall Papers	Keech W R	284 Beamish Street,Campsie,NSW	Address	88.4	South-east
1990	Printers - General	HanKuk Printing Co	284 Beamish,Campse,NSW	Address	88.4	South-east

YEAR	Activity	Name	Address	Positional accuracy	Distance (m)	Direction
1950	Dry Cleaners and Dyers	Union Hat Renovators	282 Beamish Street,Campsie,NSW	Address	89.4	South-east
1940	Radio Repairs & Service	COMMANDER RADIO CO	212 Beamish Street,Campsie,NSW	Address	90.6	North-east
2015	Funeral Directors	Jz Brothers	289 Beamish St Campsie NSW 2194	Address	90.8	North-east
2005	Computer Equipment-- Hardware	Linktech Computer Pty Ltd	319 Beamish St,CAMPSIE,NSW,2194	Address	91.1	South-east
2010	Car Alarm Systems	Scorpion Car Audio	289 Beamish St CAMPSIE 2194 NSW	Address	93.3	North-east
1950	Builders & Contrators	Weaver JH	40 anglo Rd,Campsie,NSW	Address	94.2	North-west
1950	Builders & Contrators	Hall LJ	286 Beamish,Campsie,NSW	Address	95.4	South-east
2015	Mobile Telephones - Service & Repairs	Thomas Mobile Phones	Shp9/ 281 Beamish St Campsie NSW 2194	Address	95.8	North-east
1965	Bicycles & Accessories	Eclipse Cycle&Electrical Supply	307,Beamish,NSW	Address	96.0	East
1950	Painters, Decorators & Glaziers	Chessel A W	48 Amy Street,Campsie,NSW	Address	97.4	South-west
1980	Electronic Equipment & Parts - Retail or Service	Tandy Electronics Stores	281 Beamish St.,Campsie,NSW	Address	101.2	North-east
1940	Printers - Letterpress	Leslie&Steed	18 Anglo Road,Campsie,NSW	Address	101.4	North
1950	Newspapers - General	Campsie Weekly Gazette	18 Anglo Road,Campsie,NSW	Address	101.4	North
1950	Newspapers - General	Weekly Gazette The	18 Anglo Road,Campsie,NSW	Address	101.4	North
1950	Printers - Letterpress	Leslie & Steed	18 Anglo Road,Campsie,NSW	Address	101.4	North
1950	Clothing - Frocks Mfrs.	Hall's	273 Beamish Street,CAMpsie,NSW	Address	103.3	North-east
1965	Chemists— Pharmaceutical	Golds Pharmacy	273,Beamish,NSW	Address	103.3	North-east
1970	CHEMISTS— PHARMACEUTICAL	Gold's Pharmacy,	273 Beamish St.,Campsie	Address	103.3	North-east
1980	Chemists - Pharmaceutical	Gold's Pharmacy	273 Beamish St.,Campsie,NSW	Address	103.3	North-east
1950	Refrigeration	Kelvinator Refrigerators Metropolitan Dealers: Christies Lights	292 Beamish Street,Campsie,NSW	Address	104.4	South-east
1950	Engineers - Electrical	Christie's Lights	292 Beamish Street,Campsie,NSW	Address	104.4	South-east
1950	Boot Repairers	Pollack A	288 Beamish Street,Campsie,NSW	Address	104.4	South-east
1970	BOOT & SHOE REPAIRERS	Evans, Ray,	288 Beamish St.,Campsie	Address	104.4	South-east
1970	HOBBY/HANDCRAFTS SUPPLIES	Vicking Enterprises,	288 Beamish St.,Campsie	Address	104.4	South-east
1970	FOUNDATION GARMENTS	Coulson, L. R.,	271 Beamish St.,Campsie	Address	105.2	North-east
2010	Carpet Furniture & Upholstery Cleaning	Paradise Floor Coverings	271 Beamish St CAMPSIE 2194 NSW	Address	105.2	North-east
2010	Printers - General	Print Q Australia Pty Ltd	Level 1 323 Beamish St CAMPSIE 2194 NSW	Address	107.2	South-east

YEAR	Activity	Name	Address	Positional accuracy	Distance (m)	Direction
1940	Dairies	Flory A G	277 Beamish Street,Campsie,NSW	Address	107.4	North-east
1965	Butchers	Excelsis Butchery	275,Beamish,NSW	Address	109.3	North-east
1940	Stores - General	Coles G J&Co Ltd Campsie	265 Beamish Street,Sydney,NSW	Address	111.4	North-east
1950	Stores - General	Coles G J&Co Ltd	265 Beamish,Campsie,NSW	Address	111.4	North-east
2010	Chemists - Retail Pharmacies	Campsie Community Pharmacy	261 Beamish St CAMPSIE 2194 NSW	Address	112.0	North-east
2015	Chemists - Retail Pharmacies	Chemist Warehouse Campsie	265 Beamish St Campsie NSW 2194	Address	112.5	North-east
2015	Chemists - Retail Pharmacies	Chemist Warehouse Campsie - Beamish St	265 Beamish St Campsie NSW 2194	Address	112.6	North-east
2010	Chemists - Retail Pharmacies	Chemist Warehouse Campsie	265-267 Beamish St CAMPSIE 2194 NSW	Address	112.9	North-east
2015	Printers - General	Print Q Australia Pty Ltd	Level 1 / 323 Beamish St Campsie NSW 2194	Address	115.3	South-east
1950	Radio Repairs & Service	Christie F	6 Anglo Road,Campsie,NSW	Address	116.0	North
1980	Air Services & Agents	Cleopatra Travel Services Pty Ltd	4 Anglo Road,Campsie,NSW	Address	116.0	North
1965	Butchers	Aberdeen Angus Steak Shop	261a,Beamish,NSW	Address	116.7	North-east
1965	Fruiterers & Greengrocers	Isgro Bros	261,Beamish,NSW	Address	116.7	North-east
1970	CHEMISTS—PHARMACEUTICAL	O'Neill, H.,	261 Beamish St.,Campsie	Address	116.7	North-east
1980	Chemists - Pharmaceutical	O'Neill V H	261 Beamish St.,Campsie,NSW	Address	116.7	North-east
1965	Butchers	Supermeats	206,Beamish,NSW	Address	117.1	North-east
2015	Chemists - Retail Pharmacies	Discount Drug Stores Campsie	259 Beamish St Campsie NSW 2194	Address	117.5	North-east
2015	Chemists - Retail Pharmacies	Campsie Community Pharmacy	259 Beamish St Campsie NSW 2194	Address	117.5	North-east
2015	Furniture Storage & Removals	City Removal Group Pty Ltd	10/ 19 Claremont St Campsie NSW 2194	Address	123.3	South
2010	Greengrocers & Fruiterers	World Of Fruit Campsie The	234 Amy St CAMPSIE 2194 NSW	Address	125.8	West
1940	Clothing - Children's &/or Women's	Chic Lignerie Salon	253 Beamish Street,Campsie,NSW	Address	127.2	North-east
1980	General Stores	Woolworths Ltd	251 Beamish St.,Campsie,NSW	Address	127.2	North-east
2010	Chemists - Retail Pharmacies	Campsie Discount Drugstore	259 Beamish St CAMPSIE 2194 NSW	Address	127.5	North-east
1940	Hardware - Retail	Watson J F	245 Beamish Street,Campsie,NSW	Address	128.9	North-east
1950	Hardware - Retail	Watson J F	245 Beamish Street,Campsie,NSW	Address	128.9	North-east
1965	Hardware—Retail	WATSONS (CAMPSIE) PTY LTD	245,BeamishSt,NSW	Address	128.9	North-east

YEAR	Activity	Name	Address	Positional accuracy	Distance (m)	Direction
1970	PAINT, VARNISH, OILS/COLOUR MERCHANTS	Watson, J. F.,	245 Beamish St.,Campsie	Address	128.9	North-east
2015	Mobile Telephones - Service & Repairs	Easy-Dial Communications	200 Beamish St Campsie NSW 2194	Address	129.2	North-east
1950	Motor Cars & Trucks-Used	Merlino J V	34 Evaline,Campsie,NSW	Address	129.7	East
2010	Mobile Telephones - Service & Repairs	Easy-Dial Communication	200 Beamish St CAMPSIE 2194 NSW	Address	129.8	North-east
1940	Fruiterers & Greengrocers	Taranto G	200 Beamish Street,Campsie,NSW	Address	130.7	North-east
1940	Clothing - Children's &/or Women's	Kentwoods	243 Beamish Street,Campsie,NSW	Address	131.5	North-east
1940	Chemists - Pharmaceutical	Rogan H J	241 Beamish Street,Campsie,NSW	Address	134.1	North-east
2015	Greengrocers & Fruiterers	Fruit Delicious	11a Angelo Rd Campsie NSW 2194	Address	136.9	North
1950	Radio Repairs & Service	Simmons Mick Ltd	239 Beamish Street,Campsie,NSW	Address	137.6	North-east
2005	Optical Prescription Dispensers	Eye Love Specs, Campsie	5 Anzac Mall Anglo Rd,CAMPSIE,NSW,2194	Address	138.8	North
1940	Builders & Contractors	Fleming A H	29 Hill Street,Campsie,NSW	Address	140.6	South-east
1965	Grocers—Retail	Hunts Bulk Foods Co	235,Beamish,NSW	Address	142.6	North-east
1970	Carriers Light	Haddad J	54 Anglo Road,Campsie,NSW	Address	145.6	West
1950	Photographers - Home Study	Barnes J J	23 Claremont Street,Campsie,NSW	Address	146.5	South-west
2005	Mobile Telephones--Repairs & Service	Corporate Mobile Phone Installations	32 Evaline St (Unit 4),CAMPSIE,NSW,2194	Address	147.9	East
2005	Photographers--Portrait & Wedding	Tone Photography	56 Amy St,CAMPSIE,NSW,2194	Address	148.7	South-west
2010	Wedding Portrait & Special Occasion Photographers	Tone Photography	56 Amy St CAMPSIE 2194 NSW	Address	149.4	South-west
1965	Clothing—Mfrs. &/or W'salers	Randall W R &Co	231,BeamishLa,NSW	Address	152.6	North-east
1970	Clothing-Men's & Boys' Wear Mfrs. &/or Wholesalers	Randall W R & Co	231 Beamish Street,Campsie,NSW	Address	152.6	North-east
1980	Clothing - Men's & Boys' Wear Mfrs &/or W'salers	Randall W R & Co	231 Beamish St.,Campsie,NSW	Address	152.6	North-east
1940	Stores - General	Selfridges (Australasia) Ltd	227 Beamish Street,Campsie,NSW	Address	153.0	North-east
1950	Stores - General	Selfridges (Australasia) Ltd	227 Beamish Street,Campsie,NSW	Address	153.0	North-east
1980	General Stores	Coles G J & Co Pty Ltd	227 Beamish St.,Campsie,NSW	Address	153.0	North-east
2010	Graziers	Mr Michall Salnikov	17 Anglo Rd CAMPSIE 2194 NSW	Address	153.2	North
2010	Graziers	Moss Vale Soul Pattin	17 Anglo Rd CAMPSIE 2194 NSW	Address	153.2	North
2010	Chemists - Retail Pharmacies	Dodds Pharmacy	17 Anglo Rd CAMPSIE 2194 NSW	Address	153.2	North
1970	METAL POLISHERS	78 6250 SELMORE BROS.	1A Hill Lane,Campsie	Address	156.1	East

YEAR	Activity	Name	Address	Positional accuracy	Distance (m)	Direction
1970	Electroplating - Household & Miscellaneous	Selmore Bros Pty Ltd	1a Hill Lane,Campsie,NSW	Address	156.1	East
1970	Chromium Platers	Selmore Bros Pty Ltd	1a Hill Lane (off Evaline Street),Campsie,NSW	Address	156.1	East
1970	Electroplating - Industrial	Selmore Bros Pty Ltd (vat and barrel plating, bright nickel, zinc, chrome, brass, cadmium)	1a Hill Lane (off Evaline Street),Campsie,NSW	Address	156.1	East
1980	Electroplating - Industrial	Selmore Bros Pty Ltd	1a Hill Lane,Campsie,NSW	Address	156.1	East
1990	Electroplating	Selmore Bros Pty Ltd	1a Hill Lane,Campsie,NSW	Address	156.1	East
2015	Chemists - Retail Pharmacies	Dodds Pharmacy	17 Anglo Rd Campsie NSW 2194	Address	158.0	North
1950	Chemists - Pharmaceutical	Parle F A	225 Beamish Street,Campsie,NSW	Address	160.0	North-east
1980	Hardware - Retail	Campsie Building & Plumbing Suppliers	337 Beamish St.,Campsie,NSW	Address	160.5	South-east
1970	Dry Cleaners and Dyers	Campsie Dry Cleaning Co	34 Hill Street,Campsie,NSW	Address	161.3	South-east
1970	DRY CLEANERS, PRESSERS/ DYERS	Campsie Dry Cleaners (on premises),	34 Hill St.,Campsie	Address	161.3	South-east
1980	Dry Cleaners & Dyers	Campsie Dry Cleaners	34 Hill St.,Campsie,NSW	Address	161.3	South-east
1990	Dry Cleaners	Campsie Dry Cleaners	34 Hill Street,Campsie,NSW	Address	161.3	South-east
1970	PHOTO-COPYING SERVICES	Campsie Business Service,	13 Anglo Road,Campsie	Address	162.5	North
1970	PRINTERS— LITHOGRAPHIC (OFFSET)	Campsie Business Service,	13 Anglo Road,Campsie	Address	162.5	North
2005	Clothing--Custom Made	Mimi's Supply	Shop 2/ 13 Anglo Rd,CAMPISIE,NSW,2194	Address	162.5	North
1965	Butchers	Beamish Butchery Pty Ltd	223,Beamish,NSW	Address	164.4	North-east
2010	Bakeries	Campsie Bakery	38 Hill St CAMPISIE 2194 NSW	Address	165.7	South-east
2010	Greengrocers & Fruiterers	Fruit Delicious	11A Anglo Rd CAMPISIE 2194 NSW	Address	166.0	North
2010	Furniture Storage & Removals	Juliet Evans	9 Anglo Rd CAMPISIE 2194 NSW	Address	168.3	North
1930	Printers	Leslie & Steed	19 Anglo Road,Campsie,NSW	Address	169.5	North-west
1970	DENTAL LABS. & TECHNICIANS	Herdman, G. A.,	19 Anglo Road,Campsie	Address	169.5	North-west
2005	Optical Prescription Dispensers	Eye Love Specs	9 Anglo Rd,CAMPISIE,NSW,2194	Address	169.7	North
1965	Butchers	Ideal Meat Mart	192,Beamish,NSW	Address	172.1	North
1980	Dry Cleaners & Dyers	Lawrence Dry Cleaners Pty Ltd	192 Beamish St.,Campsie,NSW	Address	172.1	North
2005	Fish & Seafoods--Retail	Campsie Hills Seafood	192 Beamish St,CAMPISIE,NSW,2194	Address	172.1	North

YEAR	Activity	Name	Address	Positional accuracy	Distance (m)	Direction
2015	Bakeries	Campsie Bakery	38 Hill St Campsie NSW 2194	Address	172.5	South-east
2015	Mobile Telephones - Service & Repairs	Telstra Store Campsie	215 Beamish St Campsie NSW 2194	Address	173.3	North-east
1950	Radio Repairs & Service	Thompsons Radio Service Club	339 Beamish Street,Campsie,NSW	Address	173.4	South-east
1965	Lighting	Fluorescent Industries Pty Ltd	339,Beamish,NSW	Address	173.4	South-east
1950	Builders & Contrators	Keato WA	29 Claremont,Campsie,NSW	Address	174.7	South
1965	Fruiterers & Greengrocers	La Rosa A	190,Beamish,NSW	Address	179.9	North
2010	Bakeries	Bakers Land	209 Beamish St CAMPSIE 2194 NSW	Address	184.8	North-east
2015	Bakeries	Bakers Land	209 Beamish St Campsie NSW 2194	Address	185.1	North-east
2010	Telecommunication Consultants	Jem Communications	30 Hill St CAMPSIE 2194 NSW	Address	186.3	South-east
1965	Grocers—Retail	Southwood R	343,Beamish,NSW	Address	187.8	South-east
2015	Bakeries	Cake World	207 Beamish St Campsie NSW 2194	Address	189.8	North-east
2015	Bakeries	Landis Cakes	207 Beamish St Campsie NSW 2194	Address	189.8	North-east
2015	Chemists - Retail Pharmacies	Lo Alan	188 Beamish St Campsie NSW 2194	Address	190.2	North
2010	Bakeries	Cake World	207 Beamish St CAMPSIE 2194 NSW	Address	190.3	North-east
2010	Bakeries	Landis Cakes	207 Beamish St CAMPSIE 2194 NSW	Address	190.3	North-east
1950	Chemists - Pharmaceutical	Washington H Soul Pattinson & Co Ltd	188 Beamish Street,Campsie,NSW	Address	190.4	North
1965	Chemists—Pharmaceutical	WASHINGTON H SOUL PATTINSON & CO LTD	188,Beamish,NSW	Address	190.4	North
1980	Chemists - Pharmaceutical	Washington H Soul Pattinson & Co Ltd	188 Beamish St.,Campsie,NSW	Address	190.4	North
2010	Chemists - Retail Pharmacies	Lo Alan	188 Beamish St CAMPSIE 2194 NSW	Address	190.4	North
2015	Chemists - Retail Pharmacies	Friendly Pharmacy	203 Beamish St Campsie NSW 2194	Address	190.5	North-east
1950	Clothing - Children's Wear - Mfrs. &/or W'srls.	Rosen A	345 Beamish St,Campsie,NSW	Address	192.4	South-east
1965	Clothing—Children's Wear—Mfrs. &/or W'salers	NOTT HARRY K PTY LTD	345,Beamish,NSW	Address	192.4	South-east
2015	Telecommunication Consultants	Jem Communications	30 Hill St Campsie NSW 2194	Address	192.4	South-east
2015	Hotel Restaurant & Club Supplies	Fortuna Asia Pacific Pty Ltd	205 Beamish St Campsie NSW 2194	Address	193.3	North-east
2010	Chemists - Retail Pharmacies	Friendly's Chemist	203 Beamish St CAMPSIE 2194 NSW	Address	194.0	North
1980	Chemists - Pharmaceutical	Canterbury District	203 Beamish St.,Campsie,NSW	Address	194.2	North

YEAR	Activity	Name	Address	Positional accuracy	Distance (m)	Direction
		Pharmacy Pty Ltd				
1940	Cleaners & Dryers	Mark Mayne Pty Ltd Head Office	205 Beamish Street,Campsie,NSW	Address	194.6	North-east
2005	Building Contractors	Gebrael Constructions	6 Marlowe St,CAMPISIE,NSW,2194	Address	195.2	South
1950	Veterinary Surgeons & Hospitals	Buckingham J W (B.V.Sc.)	Branches: 347 Beamish Street,Campsie,NSW	Address	196.4	South-east
1965	Aquariums & Supplies	Condie Harold	347,Beamish,NSW	Address	196.4	South-east
1970	ANIMAL & BIRD DEALERS	New Pet Shop, The Condie,	347 Beamish St.,Campsie	Address	196.4	South-east
1970	ANIMAL & BIRD FOOD SUPPLIES	Shop&Canine Meat Service,	347 Beamish St.. Campsie,NSW	Address	196.4	South-east
1930	Motor Service Stations	Campsie	Anglo Road,Campsie,NSW	Street		West
1930	Motor Engineers and Repairers	O'Rourke JJ	Anglo Road,Campsie,NSW	Street		West
1950	Dry Cleaners and Dyers	Stunning The	Anglo Road,Campsie,NSW	Street		West
1950	Chemists - Pharmaceutical	Hannaford C J	Anglo Road,Campsie,NSW	Street		West
1970	LAMINATED MATERIALS/PRODUCTS MANUFACTURERS	Utick, E. M. Pty. Ltd.,	Cnr. Harp & Elizabeth Sts.,Campsie	Street		East
1970	JOINERY MANUFACTURERS	Utick, E. M. Pty. Ltd.,	Cnr. Harp&Elizabeth Sts.,Campsie	Street		East
1970	GLAZIERS	Utick, E. M. Pty. Ltd.,	Cnr. Harp & Elizabeth Sts.,Campsie	Street		East
1970	GLASS MERCHANTS	Utick, E. M. Pty. Ltd.,	Cnr. Harp & Elizabeth Sts.,Campsie	Street		East
1970	Plaster Mfrs.	Australian Plaster Industries Pty Ltd	Grand Avenue,Campsie,NSW	Street		East
1970	PLASTIC LAMINATED PRODUCTS MANUFACTURERS	Utick, E. M. Pty. Ltd.,	Cnr. Harp & Elizabeth Sts.,Campsie	Street		East
1970	CHEMISTS— PHARMACEUTICAL	Empson's Pharmacy,	Cnr. 200 Beamish St. & Anglo Road,Campsie	Street		West
1980	Builders & Contractors	Bryant W J (Builder) Pty Ltd	Cnr. Harp & Elizabeth Sts.,Campsie,NSW	Street		East
1980	Particle Board	Utick E M Pty Ltd	Cnr. Harp & Elizabeth Sts.,Campsie,NSW	Street		East
1980	Laminates &/or Laminated Panels	Utick E M Pty Ltd	Cnr. Harp & Elizabeth Sts.,Campsie,NSW	Street		East
1980	Building Supplies	Utick E M Pty Ltd	Cnr. Harp & Elizabeth Sts.,Campsie,NSW	Street		East
1980	General Stores	Woolworths Ltd	Evaline St.,Campsie,NSW	Street		East
2010	Greengrocers & Fruiterers	Growers Fruit Market	Campsie Cntr 14-28 Amy St CAMPISIE 2194 NSW	Street		Onsite
2010	Curtains - Custom & Ready-Made	Mansours	Suite 2 Level 2 59-63 Evaline St CAMPISIE 2194 NSW	Street		South-east
1970	SADDLE TREE MFRS	FOURIGHT PTY LIMITED	(Office) P.O. Box 96,Campsie	Place		North-east
2010	Cosmetic Retailers	Amore Pty Ltd	Campsie Shopping Centre CAMPISIE 2194 NSW	Place		Onsite

YEAR	Activity	Name	Address	Positional accuracy	Distance (m)	Direction
2010	Chemists - Retail Pharmacies	My Chemist Campsie	Shop 21 14-28 Amy St CAMPSIE 2194 NSW	Place		Onsite
2010	Greengrocers & Fruiterers	Growers Fruit Market	Campsie Cntr CAMPSIE 2194 NSW	Place		Onsite
2015	Cosmetic Retailers	Amore Pty Ltd	Campsie Shopping Centre Campsie NSW 2194	Place		South-east
1970	PHOTOGRAPHERS—PORTRAIT	Identity Studio Pty. Ltd.,	Campsie,NSW	Suburb		East
1970	RADIOLOGISTS	Dalgarno, M. C.,	Campsie,NSW	Suburb		East
1980	SUEDE & /OR FLOCK FINISHING	Campsie, Sydney	Campsie, New South Wales, Australia	nan		South-west

Land Insight uses a number of address geocoding techniques and has characterised them based on completeness (match rates) and positional accuracy. When a historical street address is incomplete or a match is not found, a record identified as being in the surrounding area will be included for reference and the accuracy of the data is approximate only. An explanation of the positional accuracy records is defined in the table below.

Historical data positional accuracy and georeferencing results explanation		
Positional accuracy	Georeferenced	Description
Address	Located to the address level	<i>When street address and names fully match.</i>
Street	Located to the street centroid	<i>When street names match but no exact address was found. Location is approximate.</i>
Place	Located to the structure, building or complex	<i>When building, residential complex or structure name match but no exact address was found. Location is approximate.</i>
Suburb	Located to the suburb area	<i>When suburb name match but no exact address was found. Location is approximate.</i>

The data used in this section was extracted from range of historical commercial trade directories and business listings. The business addresses were geocoded using historical information and the accuracy of the data may vary due to changes to the physical address at a given locality over time or the quality of the original records. From 2005, the historical business records in this section are considered more accurate as information was extracted from digital directories with geographic coordinate location information available. On this basis, reliance on the historic listing data should be considered when assessing the risk of contamination from an activity at the site. The presence of a business listing does not definitively confirm the actual activity that has occurred at the site. For more information on how these records were geocoded and the methodology used by Land Insight, contact us at info@landinsight.co.

Historical business directory listings have been filtered to match activities and industries identified as PCAs in Section 4.1. Please note that any record not identified within this section (due to error or unforeseen omission) does not necessarily mean that the screened area is not potentially contaminated or free of any risks.



Section 5 Natural Hazards



5.1 Fire Hazard

Map 5.1 (500m Buffer)

Bushfire Prone Areas

Category	Type	Details	Distance (m)	Direction
Not identified	-	-	-	-

Bushfire History

Type	Season	Details	Distance (m)	Direction
Not identified	-	-	-	-

5.2 Flood Hazard

Map 5.2 (500m Buffer)

Flood Planning Area

Type	Name	Details	Distance (m)	Direction
Not identified	-	-	-	-

Other Flood Studies

Type	Name	Details	Distance (m)	Direction
Not identified	-	-	-	-

Flood History

Type	Season	Details	Distance (m)	Direction
Not identified	-	-	-	-

The list provided is not comprehensive and does not consider all flood history. It only includes the information that is currently available.

5.3 Erosion Hazard

Map 5.3 (500m Buffer)

Erosion Hazard

Category	Type	Details	Distance (m)	Direction
Landslip Erosion Risk	Very slight to negligible limitations	Very Low	0.0	Onsite
Water Erosion Risk	Moderate to severe limitations	Moderate	0.0	Onsite
Wind Erosion Risk	Very slight to negligible limitations	Very Low	0.0	Onsite



Appendix A

REPORT MAPS

Big W, Shop 46, Campsie Centre
Sydney, NSW



Subject Area and Sensitive Receptors



©2024 Land Insight (LI) www.landinsight.co | 06/05/2024 | Data source: Please refer to 'Digital Data Sources' in the Product Guide

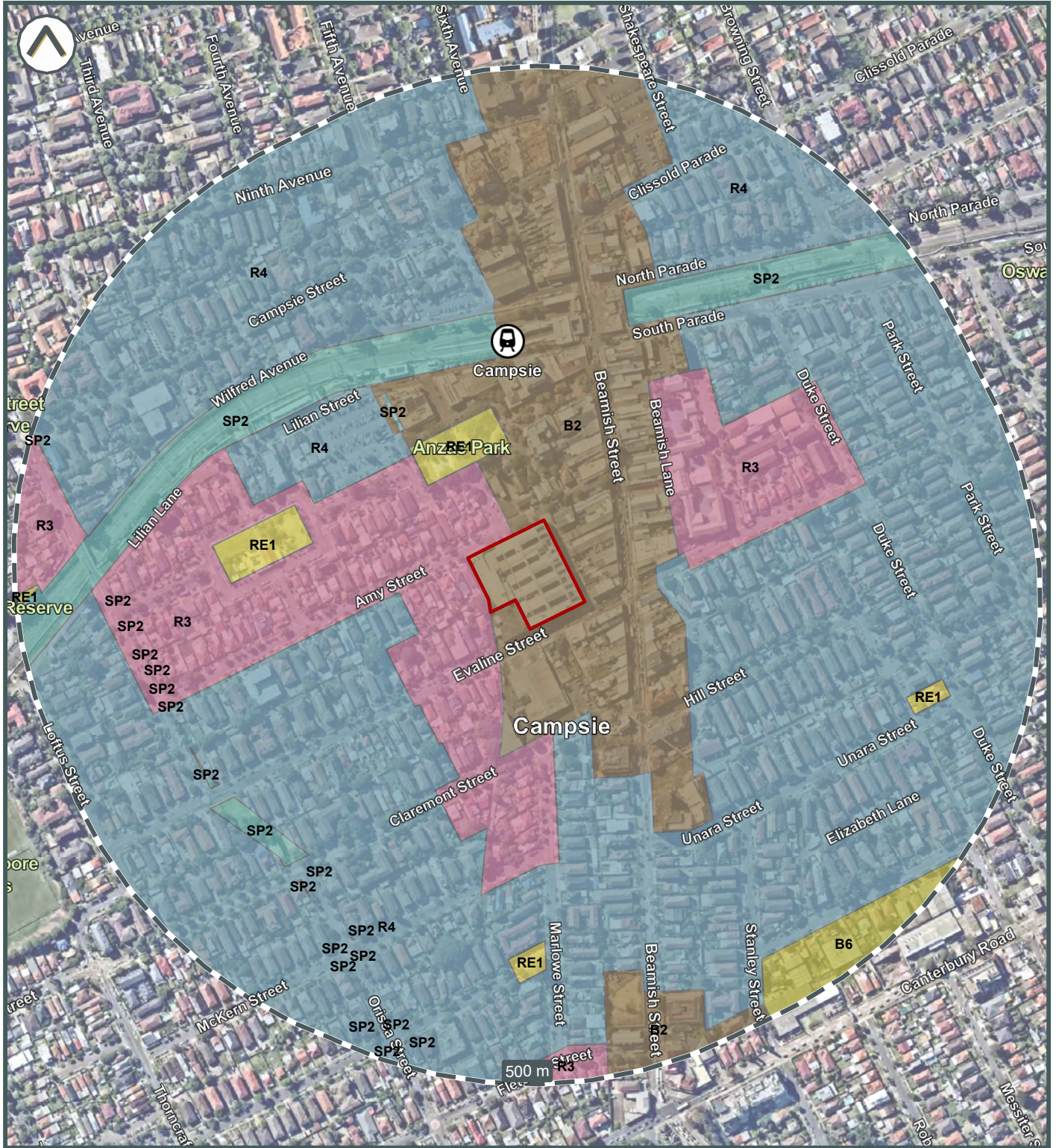
- Subject area
- Child Care Services
- Community Centres
- Education
- Places of Worship and Religious Organisations
- Parks



Land Insight do not warrant the accuracy or completeness of information in this publication and any person using or relying upon such information does so on the basis that this company shall bear no responsibility or liability whatsoever for any errors, faults, defects or omissions in the information.



Zoning



©2024 Land Insight (LI) www.landinsight.co | 06/05/2024 | Data source: Please refer to 'Digital Data Sources' in the Product Guide

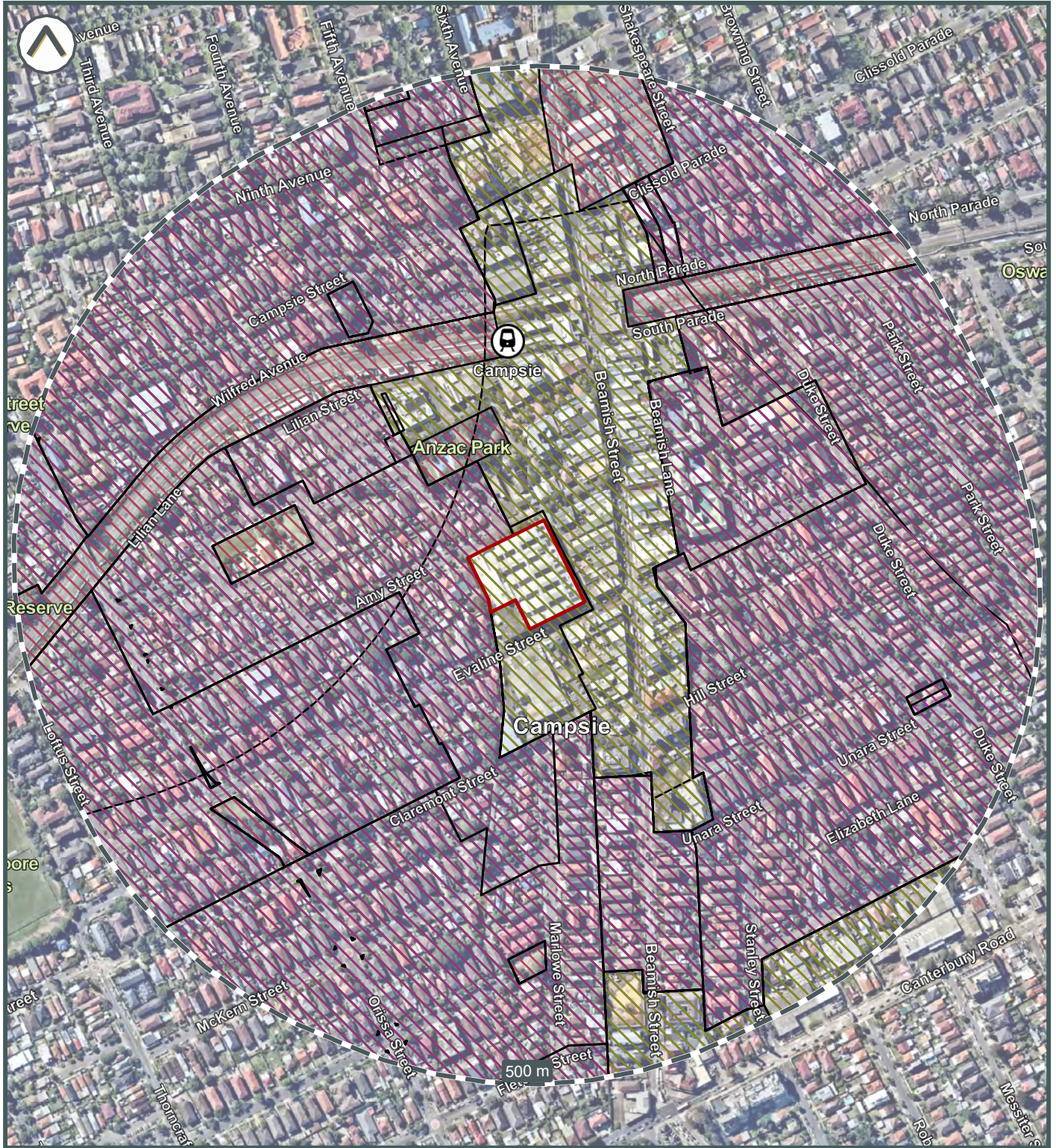
- Subject area
- B6 Enterprise Corridor
- RE1 Public Recreation
- R3 Medium Density Residential
- SP2 Infrastructure
- B2 Local Centre
- R4 High Density Residential





Planning Overlays

©2024 Land Insight (LI) www.landinsight.co | R:\LI\4105 ESR Sydney NSW Working\GIS\Project\LI-XXXXX XXXX_06/05/2024 | Data source: Please refer to 'Digital Data Sources' in the Product Guide



- Subject area
- Coal Seam Gas Exclusions
- Lot Size
- Planning Overlays
- Height of Building
- Acid Sulfate Soils
- Land Reservation Acquisition
- Maximum Floor Space Ratio (n:1)





Heritage



© 2024 Land Insight (LI) www.landinsight.co | 06/05/2024 | Data source: Please refer to 'Digital Data Sources' in the Product Guide

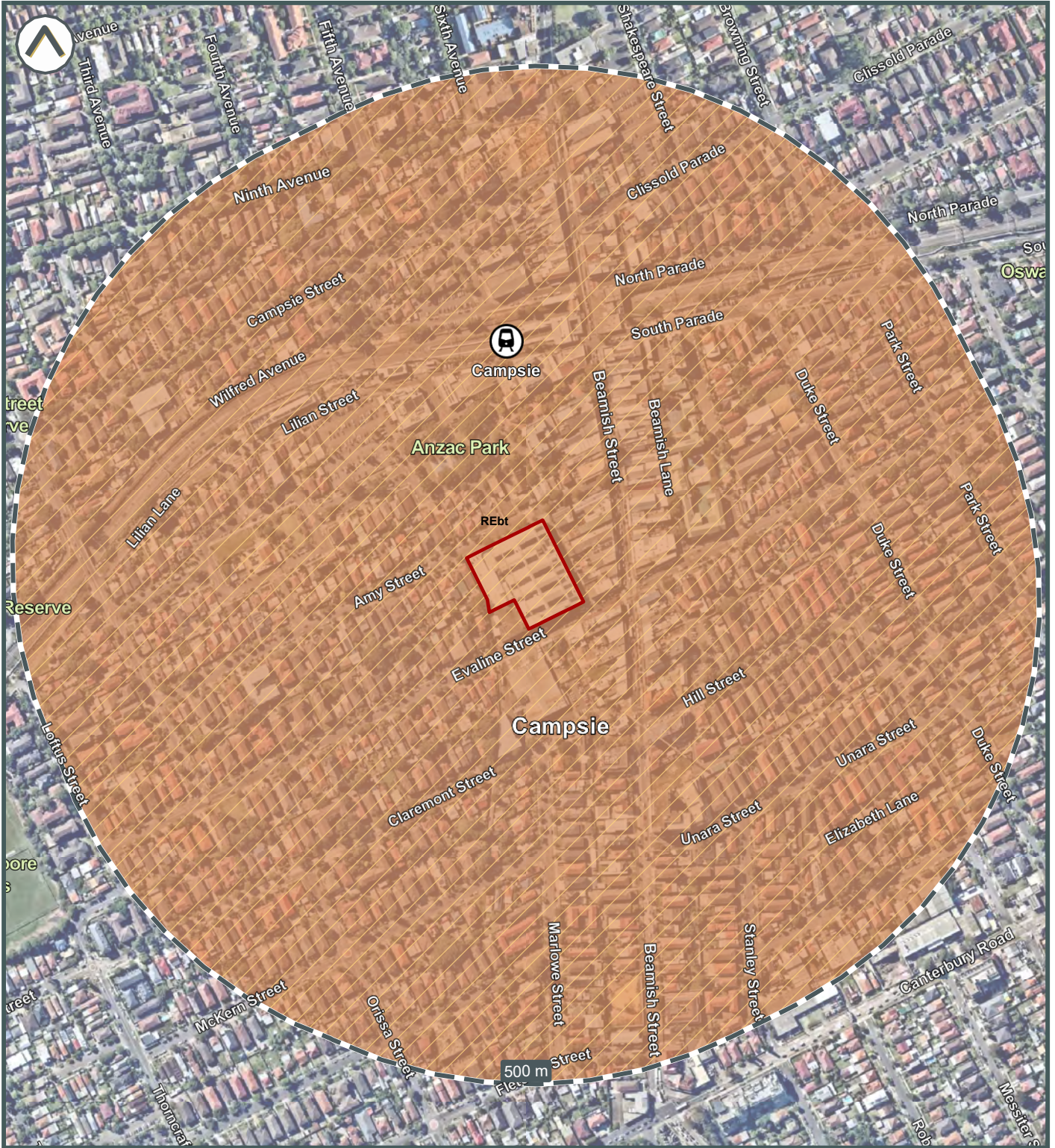
Subject area

 State and Local Heritage Registers
 Heritage Register



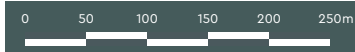


Soil Landscape and Salinity



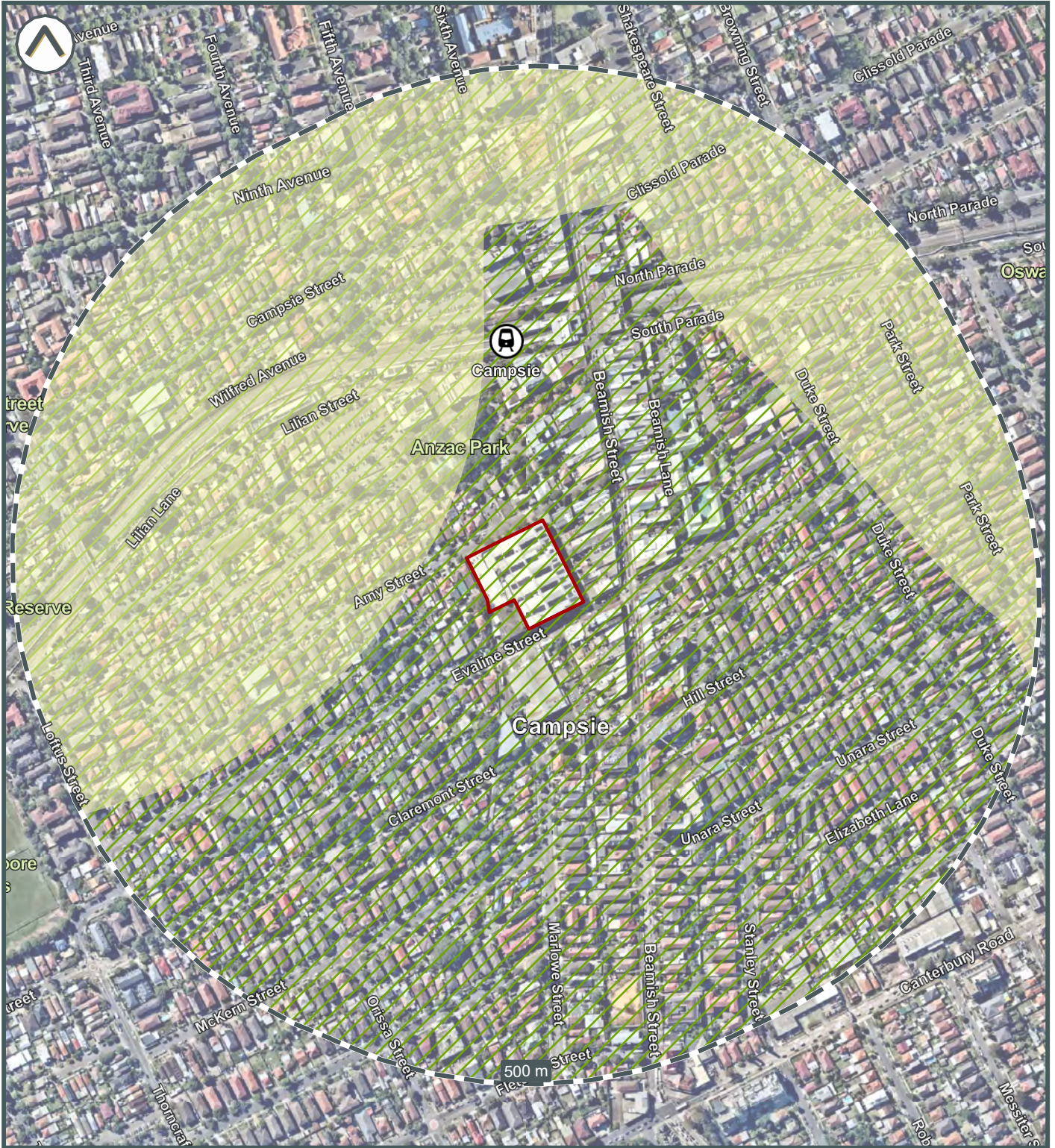
©2024 Land Insight (LI) www.landinsight.co | 06/05/2024 | Data source: Please refer to 'Digital Data Sources' in the Product Guide

- Subject area
- Radon Level (Bq/m3) 5-19
- Soil Landscape REbt



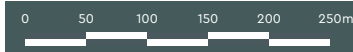


Acid Sulfate Soils



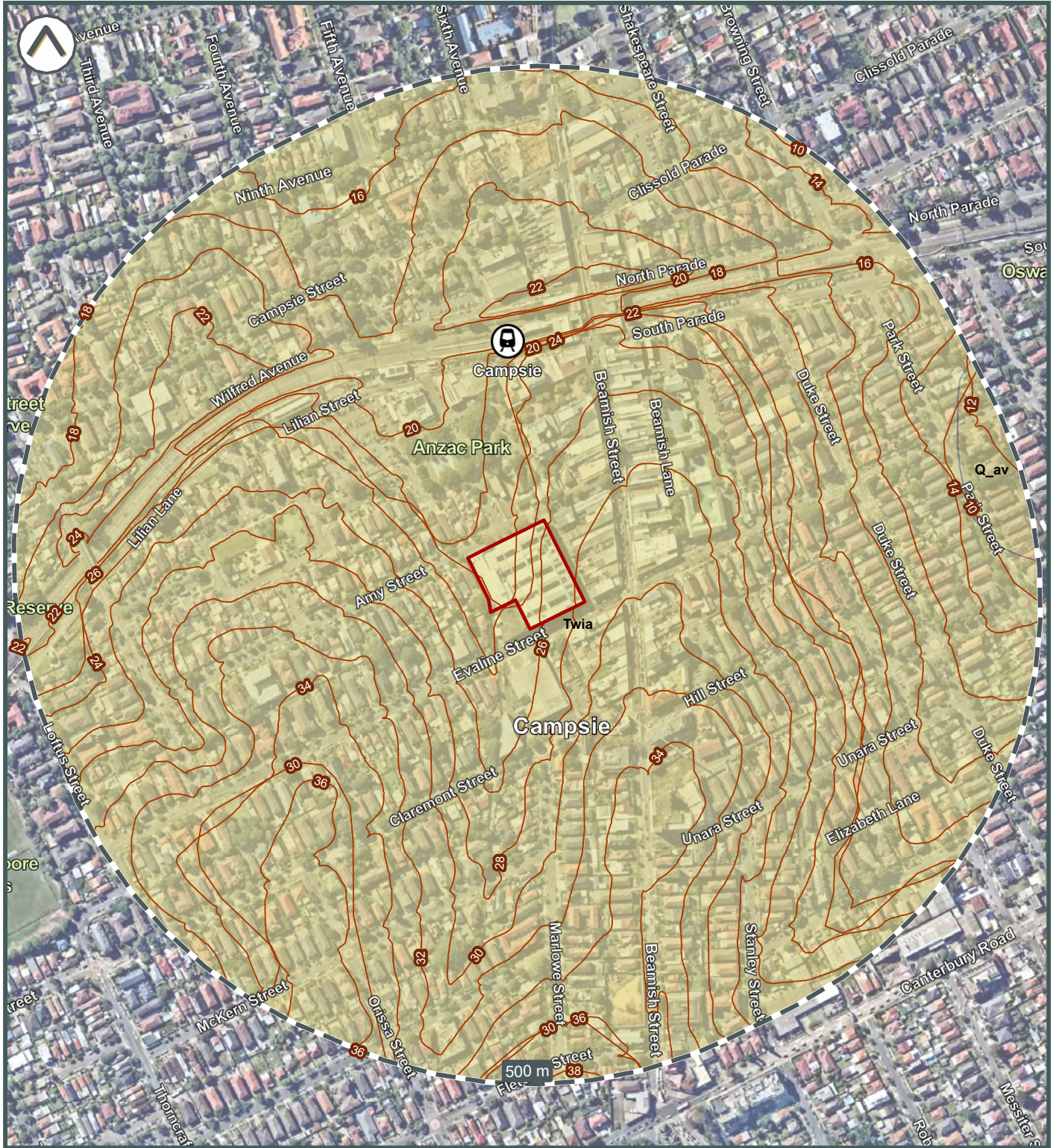
©2024 Land Insight (LI) www.landinsight.co | 06/05/2024 | Data source: Please refer to 'Digital Data Sources' in the Product Guide

- Subject area
- Atlas of Australian Acid Sulfate Soils
Extremely low probability of occurrence
- Coastal Acid Sulfate Soils
Class 5





Geology and Topography



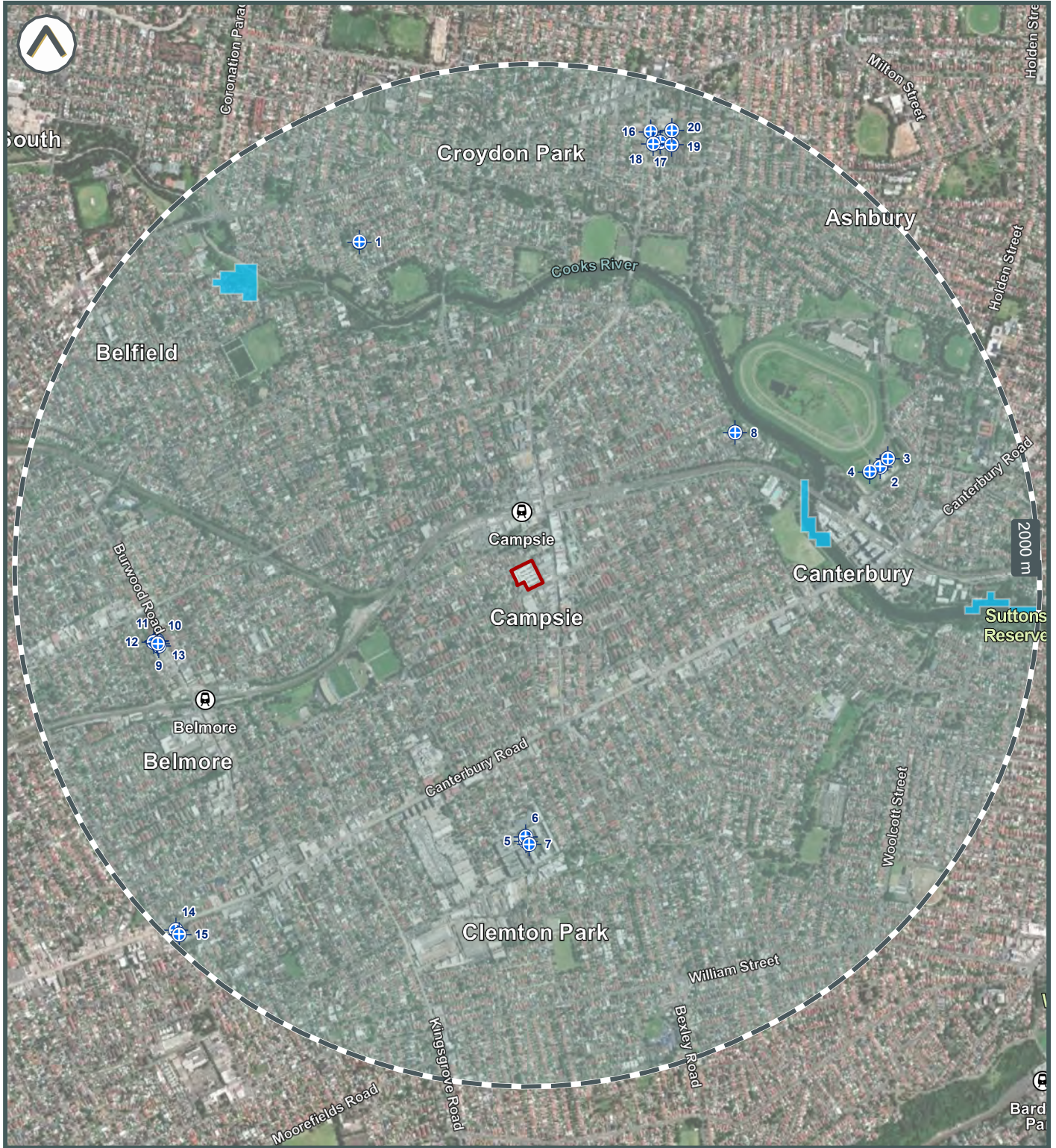
©2024 Land Insight (LI) www.landinsight.co | 06/05/2024 | Data source: Please refer to 'Digital Data Sources' in the Product Guide

- Subject area
- Topographic contour (m)
- Twia
- Q_av





Groundwater Dependent Ecosystems & Hydrogeology Constraints



©2024 Land Insight (LI) www.landinsight.co | 06/05/2024 | Data source: Please refer to 'Digital Data Sources' in the Product Guide

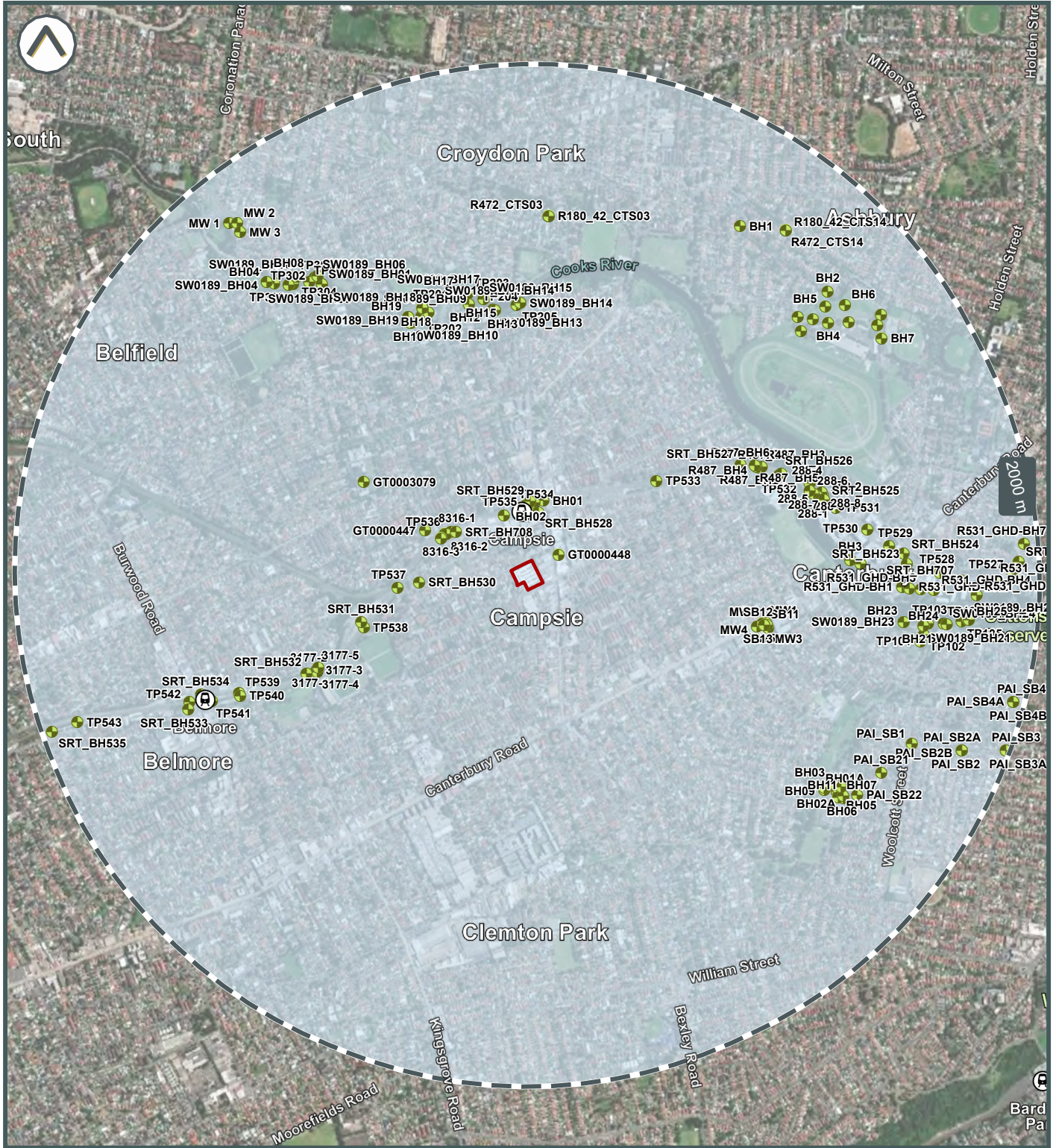
- Subject area
- Groundwater bores
- Wetlands
- Aquifer type**
- Porous, extensive aquifers of low to moderate productivity



Land Insight do not warrant the accuracy or completeness of information in this publication and any person using or relying upon such information does so on the basis that this company shall bear no responsibility or liability whatsoever for any errors, faults, defects or omissions in the information.

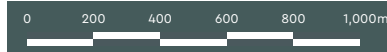


Groundwater and Other Bores



©2024 Land Insight (LI) www.landinsight.co | 06/05/2024 | Data source: Please refer to 'Digital Data Sources' in the Product Guide

- Subject area
- Other borehole/monitoring well location
- Salinity Class
- No Data



Land Insight do not warrant the accuracy or completeness of information in this publication and any person using or relying upon such information does so on the basis that this company shall bear no responsibility or liability whatsoever for any errors, faults, defects or omissions in the information.

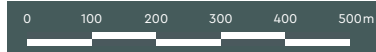


Contaminated Land Public Register



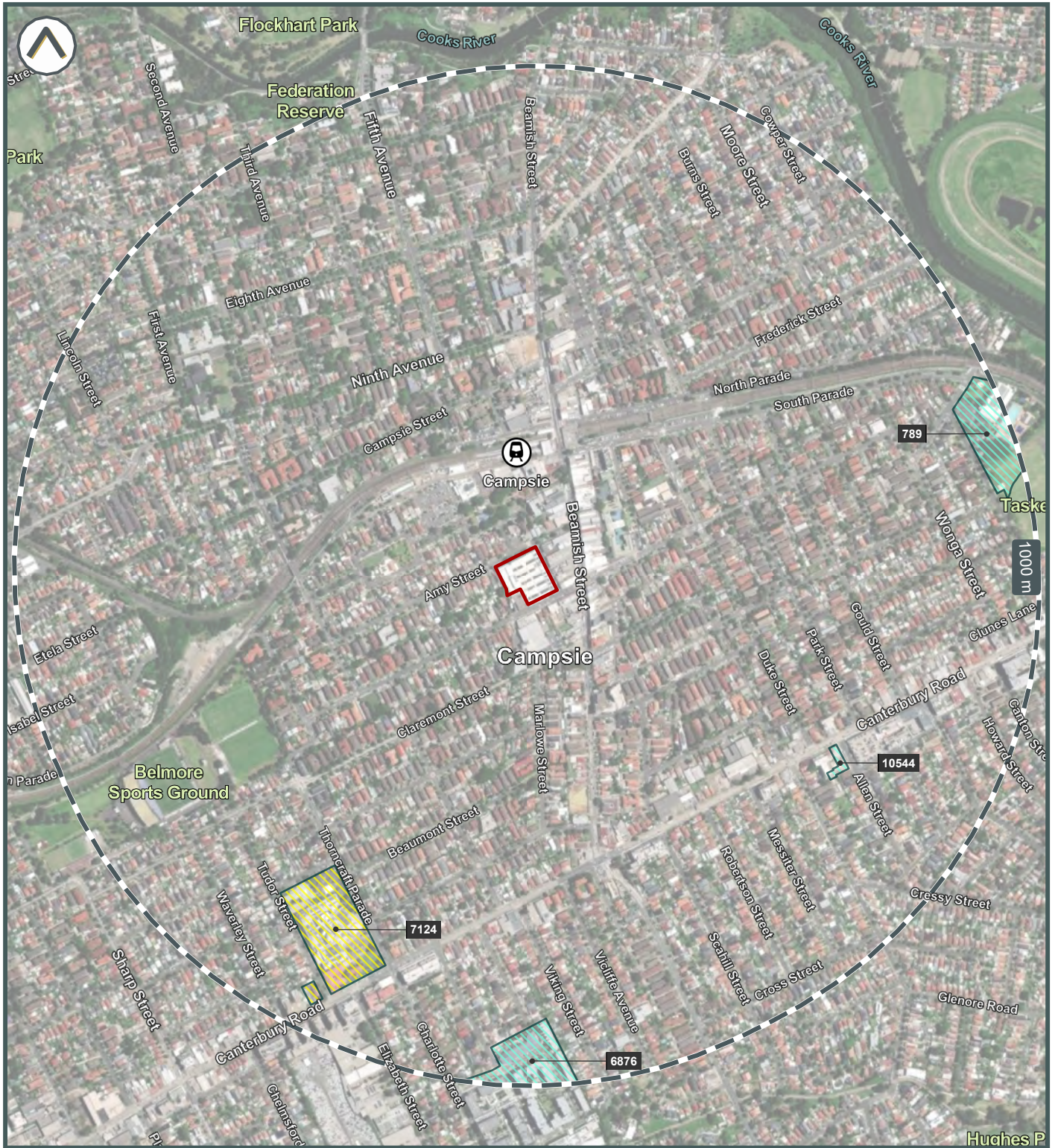
©2024 Land Insight (LI) www.landinsight.co | 06/05/2024 | Data source: Please refer to 'Digital Data Sources' in the Product Guide

- Subject area
- Contaminated Land Public Register (EPA)
- EPA Record of Notices
- EPA Notified Contaminated Sites

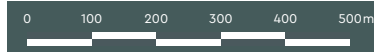




Licences, Approvals & Assessments

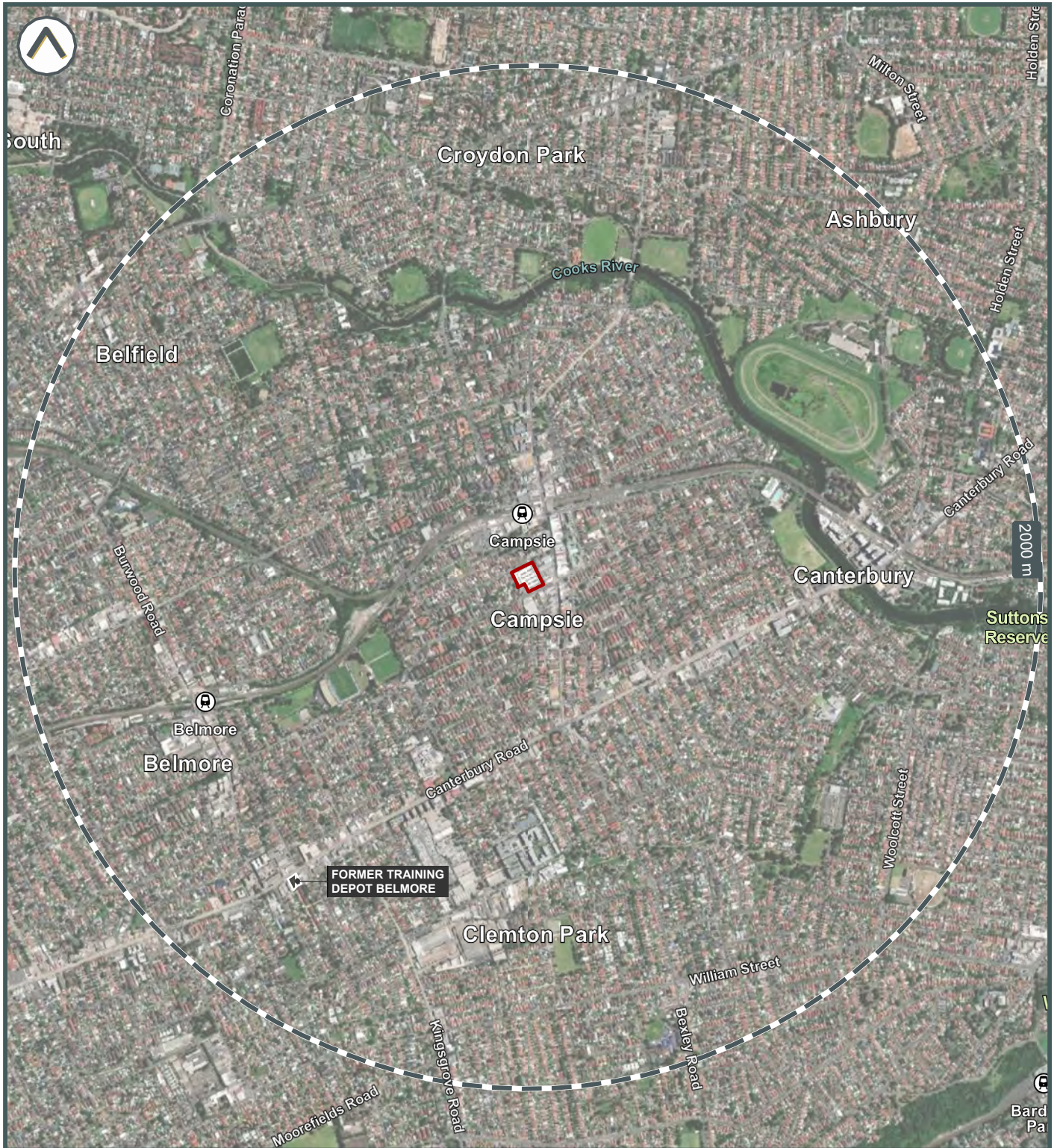


Subject area





Sites Regulated by Other Jurisdictional Body



©2024 Land Insight (LI) www.landinsight.co | 06/05/2024 | Data source: Please refer to 'Digital Data Sources' in the Product Guide

- Subject area
- Defence Area / Military Sites



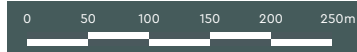


Other Potential Hazard Sources



©2024 Land Insight (LI) www.landinsight.co | 06/05/2024 | Data source: Please refer to 'Digital Data Sources' in the Product Guide

 Subject area





Potentially Contaminating Activities (PCAs)



©2024 Land Insight (LI) www.landinsight.co | 06/05/2024 | Data source: Please refer to 'Digital Data Sources' in the Product Guide

- Subject area
- Petrol Stations and Fuel Terminals
- Waste and Recycling Facilities

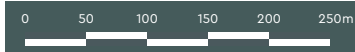




Fire Hazards



Subject area



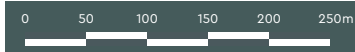
©2024 Land Insight (LI) www.landinsight.co | 06/05/2024 | Data source: Please refer to 'Digital Data Sources' in the Product Guide



Flood Hazard



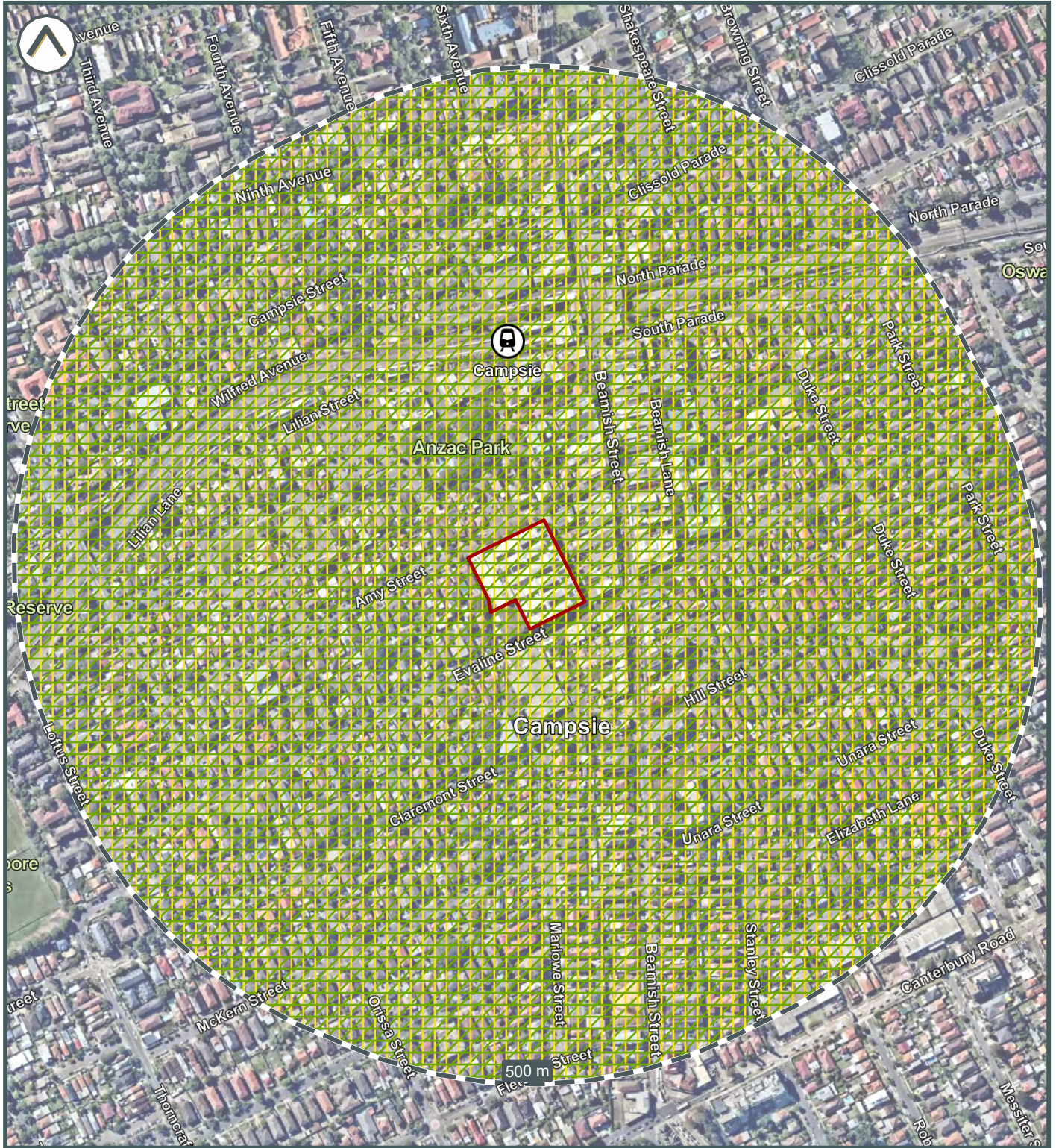
Subject area



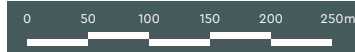
©2024 Land Insight (LI) www.landinsight.co | 06/05/2024 | Data source: Please refer to 'Digital Data Sources' in the Product Guide



Erosion Hazard



- Subject area
- Water Erosion Risk
 - Moderate
- Wind Erosion Risk
 - Very Low
- Landslip Erosion Risk
 - Very Low



An aerial photograph of a vibrant turquoise river winding through a rugged, rocky landscape. The river is surrounded by dense, green and yellowish vegetation. The water's color is strikingly bright, contrasting with the grey and brown tones of the rocks and the surrounding forest. The river flows from the top center towards the bottom left of the frame.

Appendix B

HISTORIC IMAGERY

Big W, Shop 46, Campsie Centre
Sydney, NSW

Historic Aerial Photograph - 1930



©2024 Land Insight (U) www.landinsight.co | 06/05/2024 | Data source: Please refer to 'Digital Data Sources' in the Product Guide

Subject area



Land Insight do not warrant the accuracy or completeness of information in this publication and any person using or relying upon such information does so on the basis that this company shall bear no responsibility or liability whatsoever for any errors, faults, defects or omissions in the information.

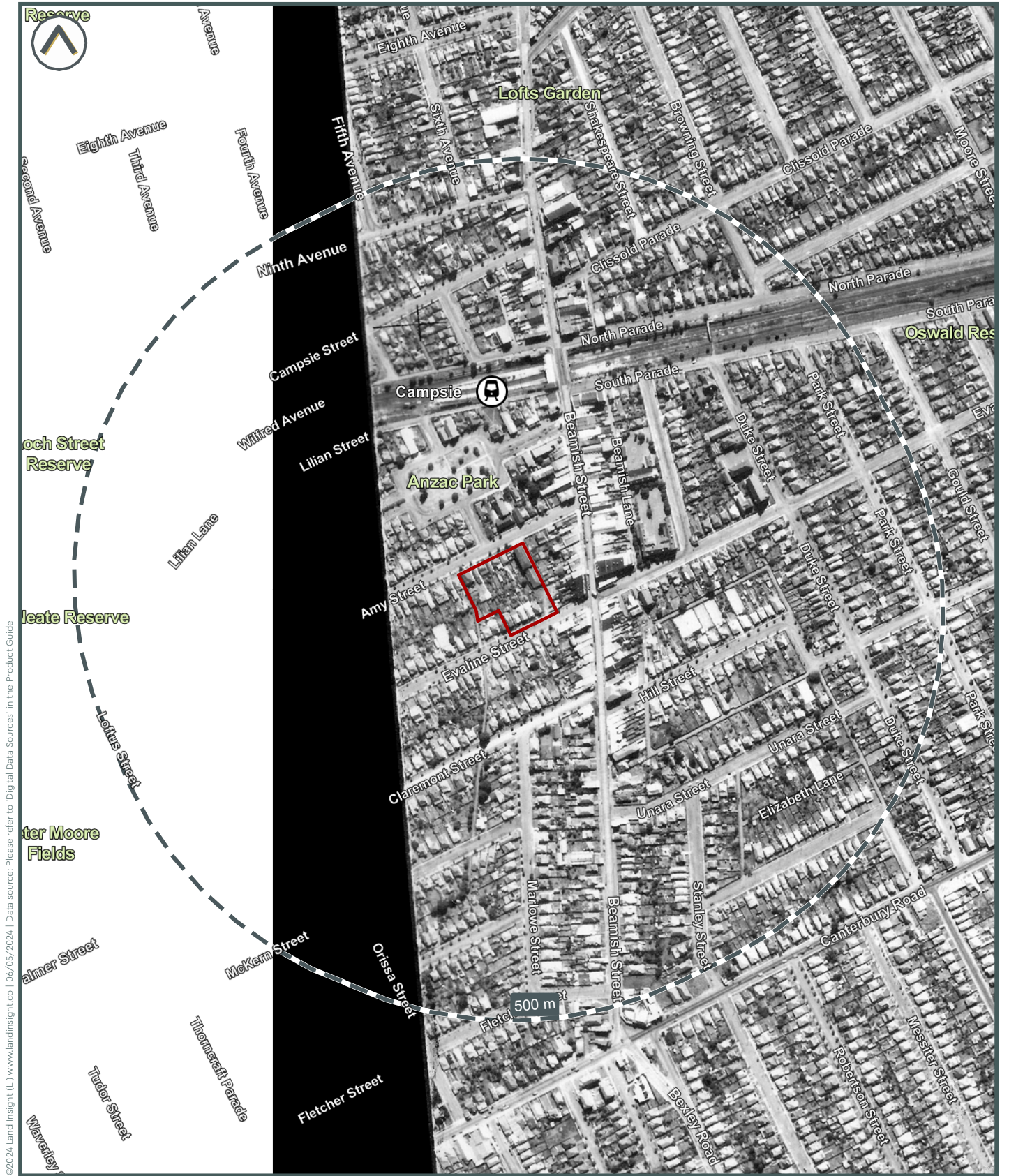
Historic Aerial Photograph - 1943



Subject area



Historic Aerial Photograph - 1953



©2024 Land Insight (U) www.landinsight.co | 06/05/2024 | Data source: Please refer to 'Digital Data Sources' in the Product Guide

Historic Aerial Photograph - 1955



©2024, Land Insight (LI) www.landinsight.co | 06/05/2024 | Data source: Please refer to 'Digital Data Sources' in the Product Guide

Subject area



Historic Aerial Photograph - 1961



©2024 Land Insight (U) www.landinsight.co | 06/05/2024 | Data source: Please refer to 'Digital Data Sources' in the Product Guide

Subject area



Historic Aerial Photograph - 1965



Historic Aerial Photograph - 1971



©2024, Land Insight (U) www.landinsight.co | 06/05/2024 | Data source: Please refer to 'Digital Data Sources' in the Product Guide

Subject area



Land Insight do not warrant the accuracy or completeness of information in this publication and any person using or relying upon such information does so on the basis that this company shall bear no responsibility or liability whatsoever for any errors, faults, defects or omissions in the information.

Historic Aerial Photograph - 1975



©2024, Land Insight (U) www.landinsight.co | 06/05/2024 | Data source: Please refer to 'Digital Data Sources' in the Product Guide

Subject area



Historic Aerial Photograph - 1978



Subject area



Historic Aerial Photograph - 1986



©2024 Land Insight (U) www.landinsight.co | 06/05/2024 | Data source: Please refer to 'Digital Data Sources' in the Product Guide

Subject area



Land Insight do not warrant the accuracy or completeness of information in this publication and any person using or relying upon such information does so on the basis that this company shall bear no responsibility or liability whatsoever for any errors, faults, defects or omissions in the information.

Historic Aerial Photograph - 1991



©2024, Land Insight (U) www.landinsight.co | 06/05/2024 | Data source: Please refer to 'Digital Data Sources' in the Product Guide

Subject area



Historic Aerial Photograph - 1994



©2024 Land Insight (U) www.landinsight.co | Data source: Please refer to 'Digital Data Sources' in the Product Guide

Subject area



Historic Aerial Photograph - 2002



©2024 Land Insight (LI) www.landinsight.co.uk | Data source: Please refer to 'Digital Data Sources' in the Product Guide

Subject area



Historic Aerial Photograph - 2004



©2024, Land Insight (U) www.landinsight.co | 06/05/2024 | Data source: Please refer to 'Digital Data Sources' in the Product Guide

Subject area



Land Insight do not warrant the accuracy or completeness of information in this publication and any person using or relying upon such information does so on the basis that this company shall bear no responsibility or liability whatsoever for any errors, faults, defects or omissions in the information.

Historic Aerial Photograph - 2005



©2024 Land Insight (U) www.landinsight.co | 06/05/2024 | Data source: Please refer to 'Digital Data Sources' in the Product Guide

Subject area



Historic Aerial Photograph - 2007



©2024, Land Insight (U) www.landinsight.co | Data source: Please refer to 'Digital Data Sources' in the Product Guide

Subject area



Historic Aerial Photograph - 2010



©2024 Land Insight (U) www.landinsight.co | 06/05/2024 | Data source: Please refer to 'Digital Data Sources' in the Product Guide

Subject area



Historic Aerial Photograph - 2014



©2024, Land Insight (U) www.landinsight.co | 06/05/2024 | Data source: Please refer to 'Digital Data Sources' in the Product Guide

Subject area



Historic Aerial Photograph - 2017



©2024 Land Insight (LI) www.landinsight.co | 06/05/2024 | Data source: Please refer to 'Digital Data Sources' in the Product Guide

Subject area



Historic Aerial Photograph - 2020



©2024, Land Insight (LI) www.landinsight.co | 06/05/2024 | Data source: Please refer to 'Digital Data Sources' in the Product Guide

Subject area



Historic Aerial Photograph - 2024



©2024 Land Insight (U) www.landinsight.co | 06/05/2024 | Data source: Please refer to 'Digital Data Sources' in the Product Guide

Subject area





The Commons
388 George Street
Sydney NSW 2000 Australia
info@landinsight.co
www.landinsight.co